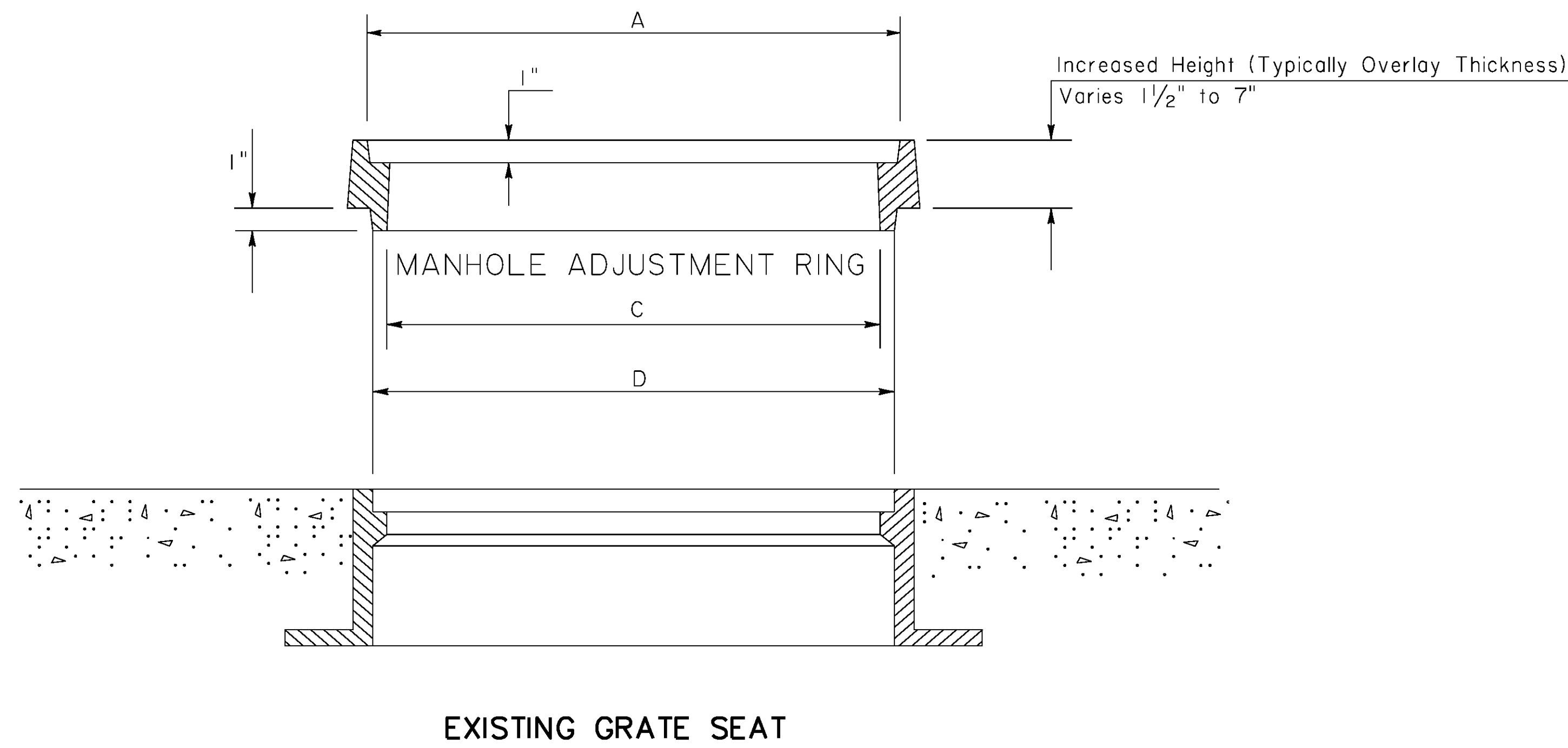
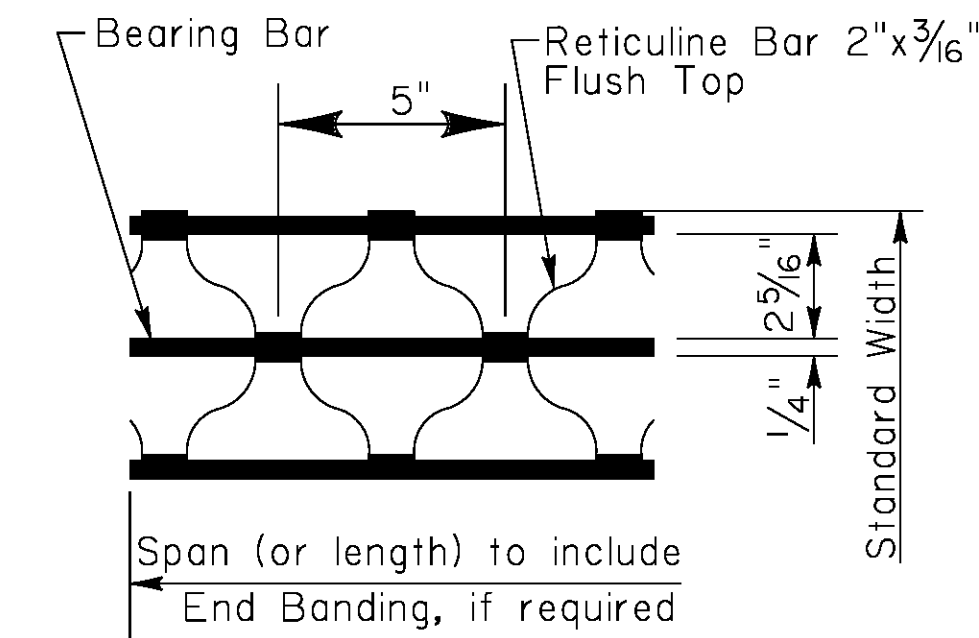


MANHOLE ADJUSTMENT RING



MANHOLE ADJUSTMENT RINGS

A (IN.)	C (IN.)	D (IN.)
23 1/2	22 1/4	23 1/2
23 3/4	22 1/2	23 3/4



DRAIN GRATE DETAIL

TYPE "N"

- Notes:
1. Grates to be galvanized after fabrication.
 2. Unless otherwise stated, TYPE "E1" Frame is to be used with these grates. (See Sheet 2)
 3. Catch basin to be constructed so that bearing bars are parallel to traffic.
 4. Supplier of Grate also is to furnish Pre-Fitted Grate Frame.

DETAILS OF WELDED & SEALED DRAIN GRATE

Continuous Weld for full depth each Bearing Bar to End Bars and Cross Bars.

All Bearing Bars to be set flush on Grate Frame.

Weight of Drain Grate = 156 lbs. ± 5%

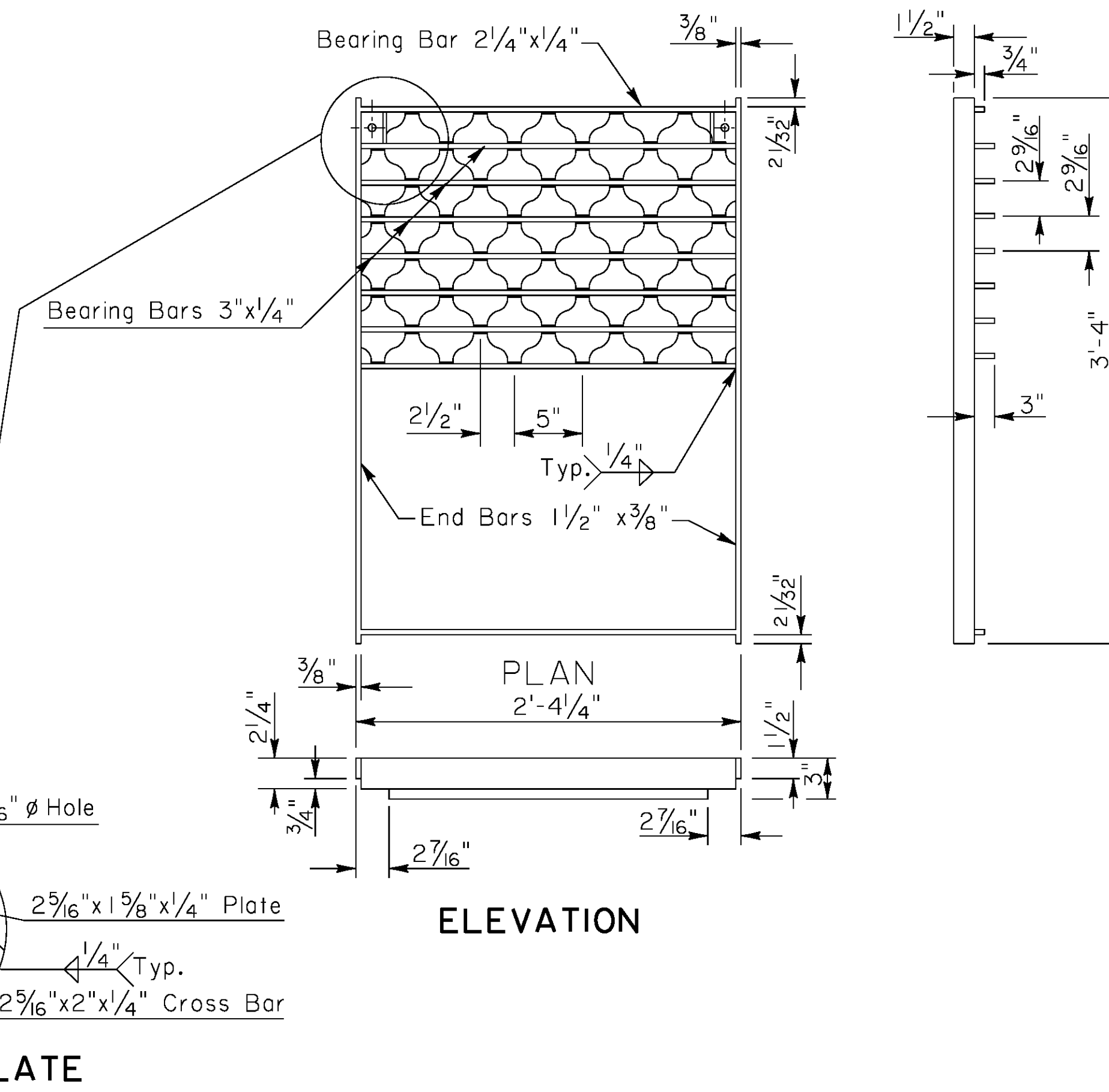
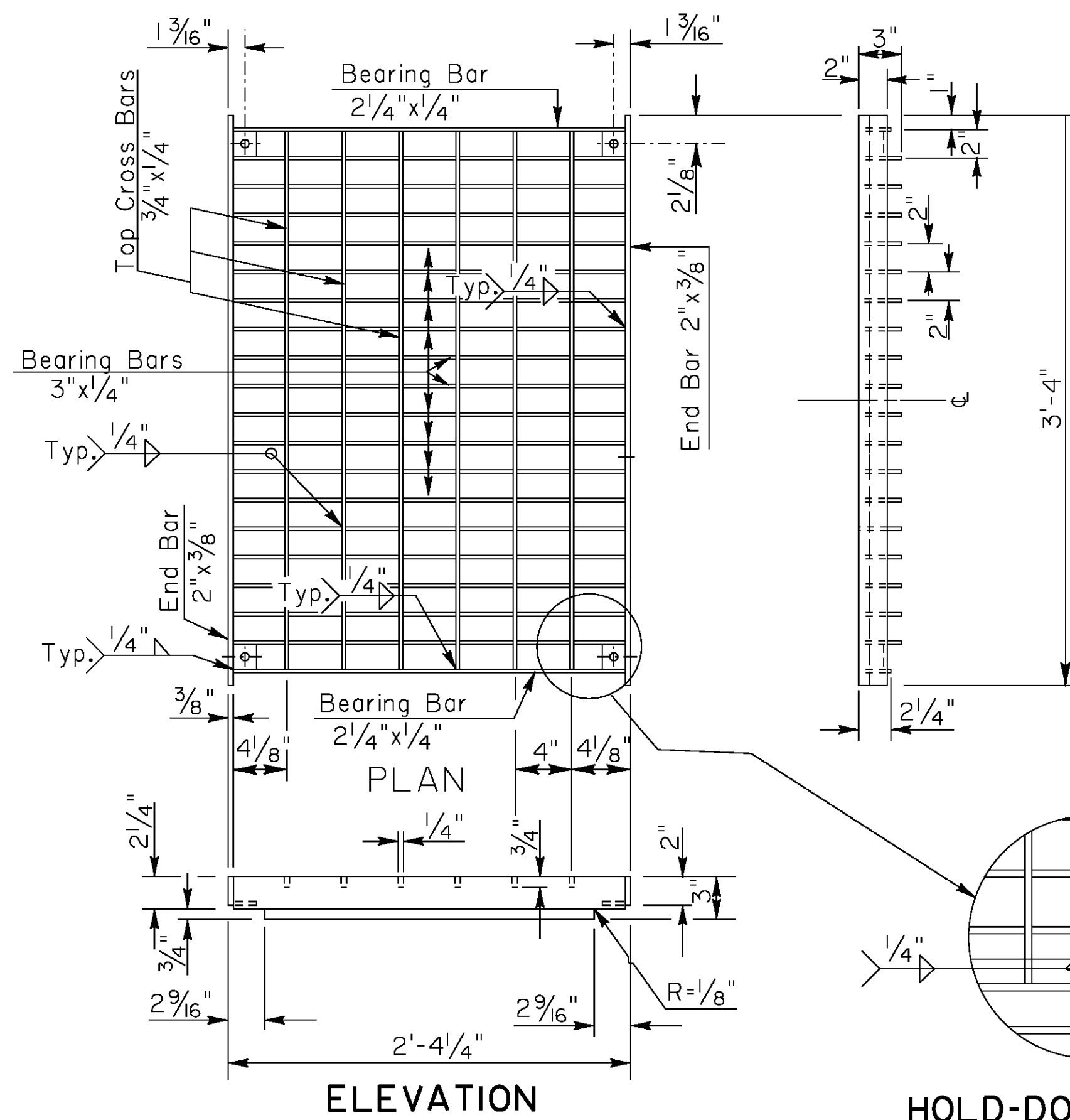
DETAILS OF RIVETED RETICULINE DRAIN GRATE ALTERNATE

Continuous Weld for full depth each Bearing Bar to End Bars.

All Bearing Bars to be set flush on Grate Frame.

Center to Center of Bearing Bars equal 2 3/8" plus Bearing Bar Thickness.

Weight of Drain Grate = 160 lbs. ± 5%



DETAILS OF GRATES, GRATE FRAMES & COVERS FOR CATCH BASINS AND MANHOLES

5 OF 6

MC-01-5

SHEET

OF

JUNE 2010