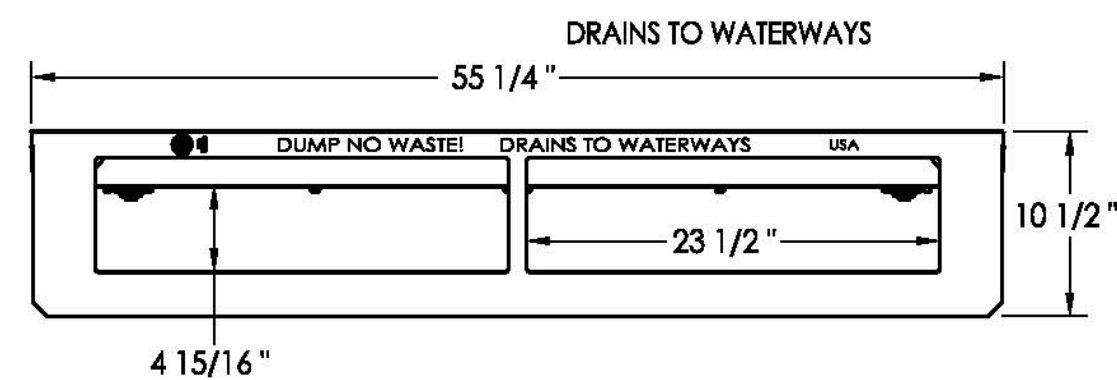
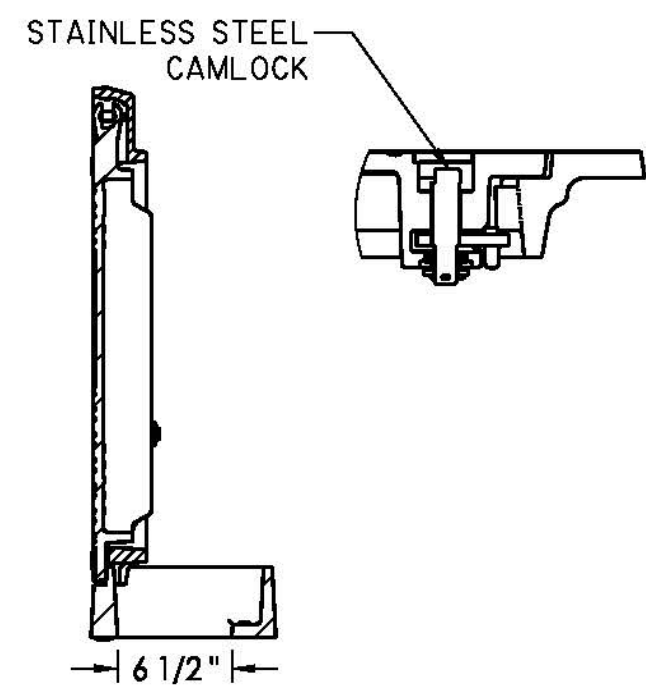
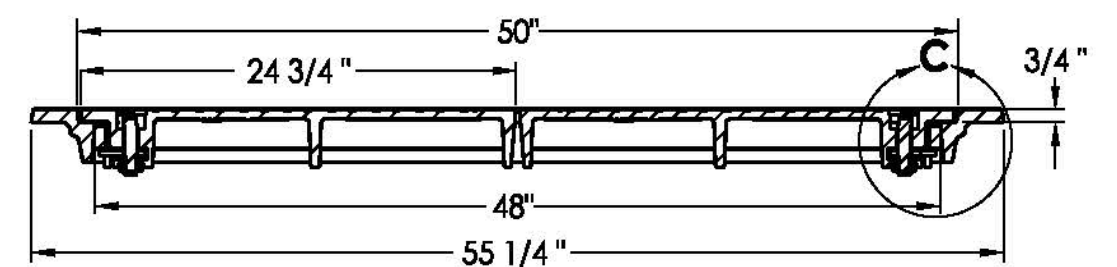


PLAN OF CAST IRON COVER

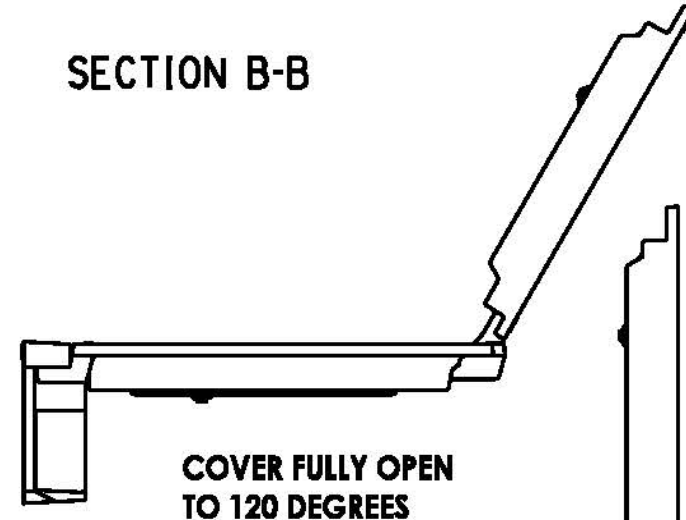


SECTION A-A

V4302 V4300-7 Set



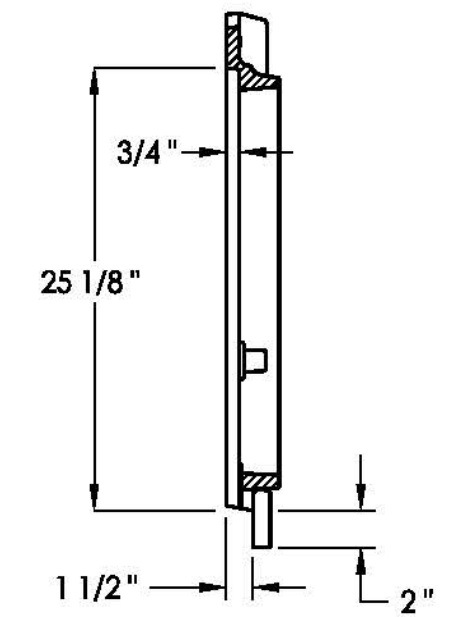
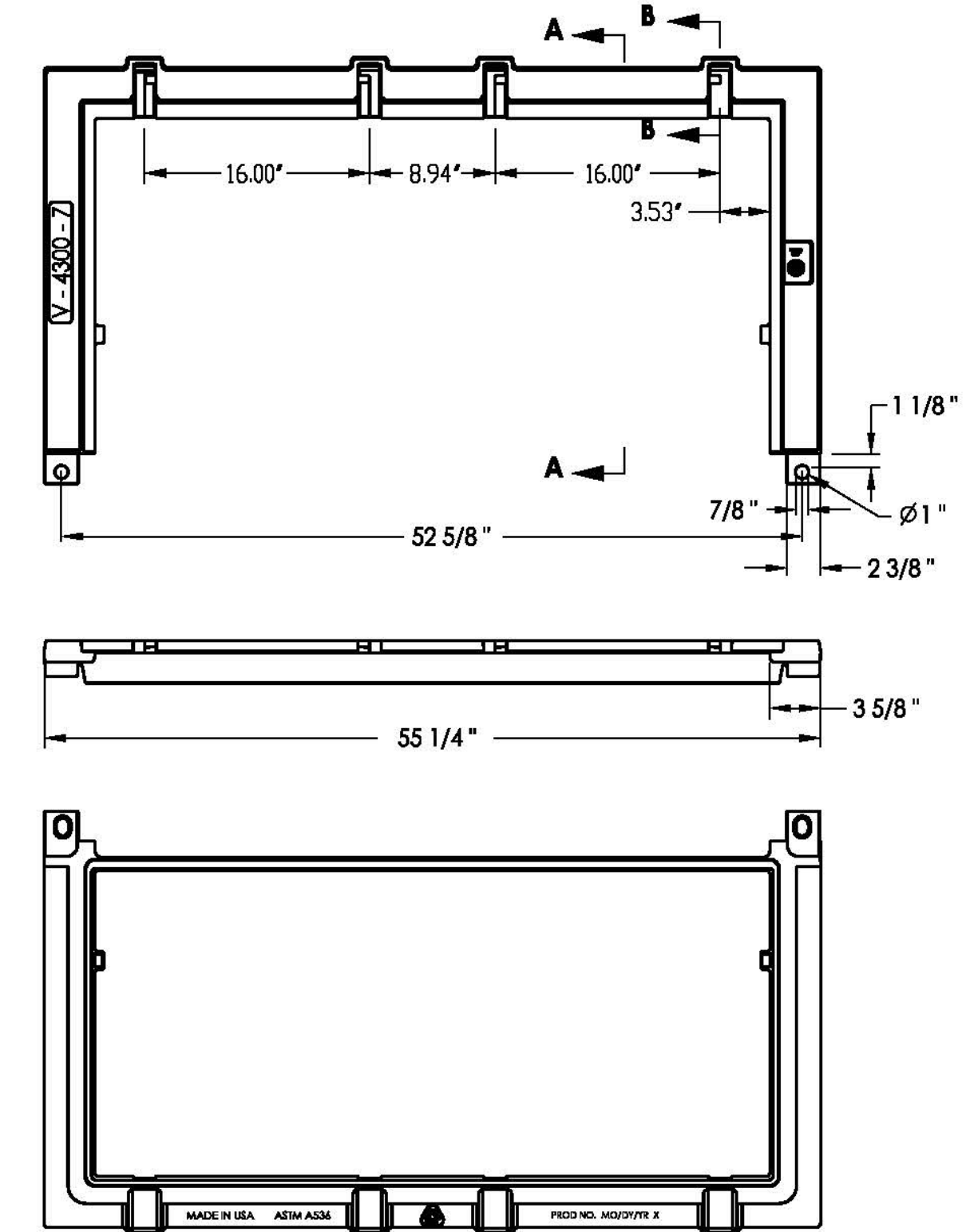
SECTION B-B



COVER AT 90 DEG. SAFETY STOP POSITION

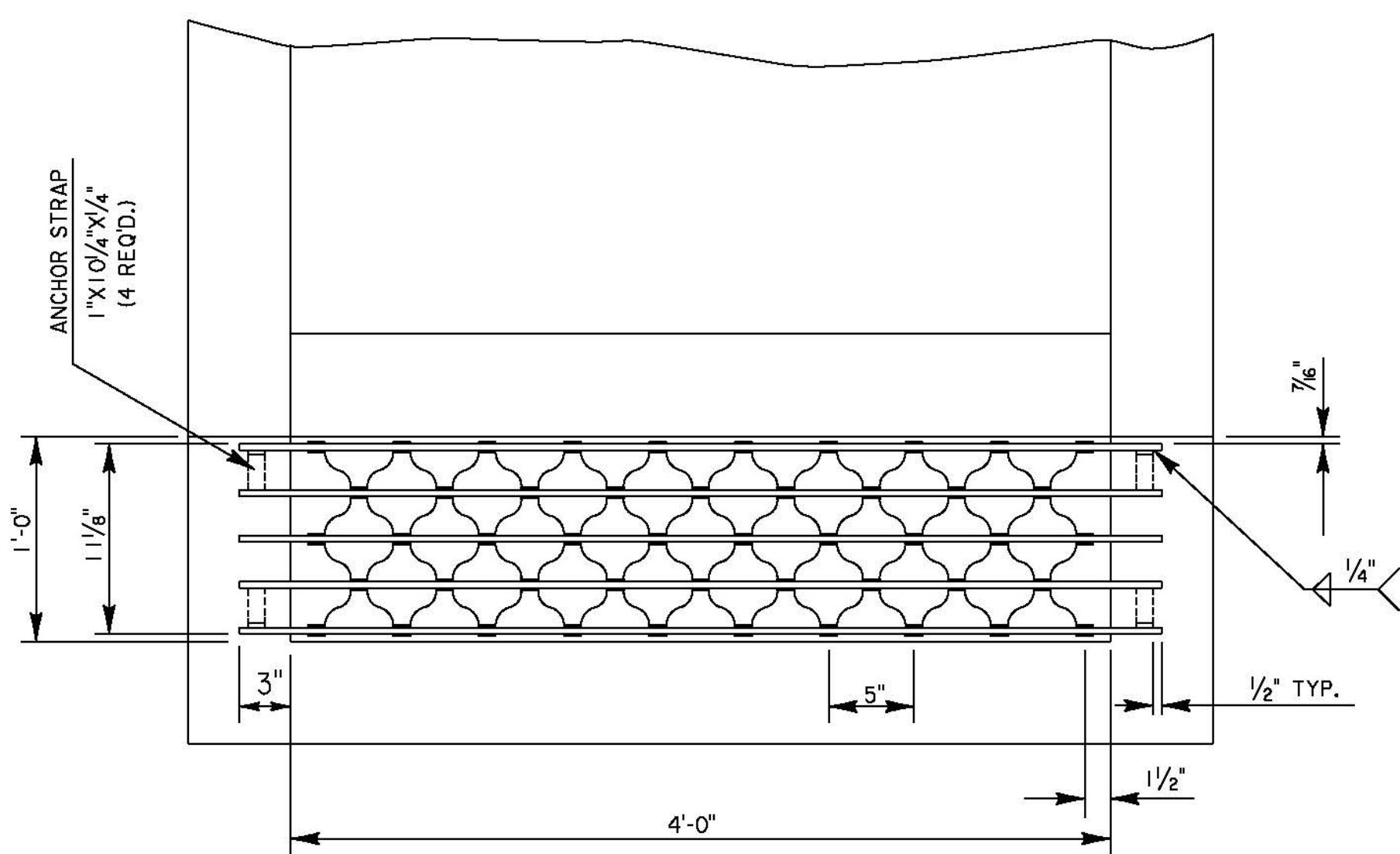
TYPE "H"

NOTES:
CASTINGS TO BE ASTM A536
WEIGHT OF CAST IRON COVER (2) = 125 LBS/EACH
WEIGHT OF CAST IRON FRAME = 134 LBS
WEIGHT OF UNIT = 384 LBS



SECTION A-A

V4300-7 Frame



PLAN

DETAILS OF RIVETED
RETICULINE DRAIN GRATE
(ALTERNATE)

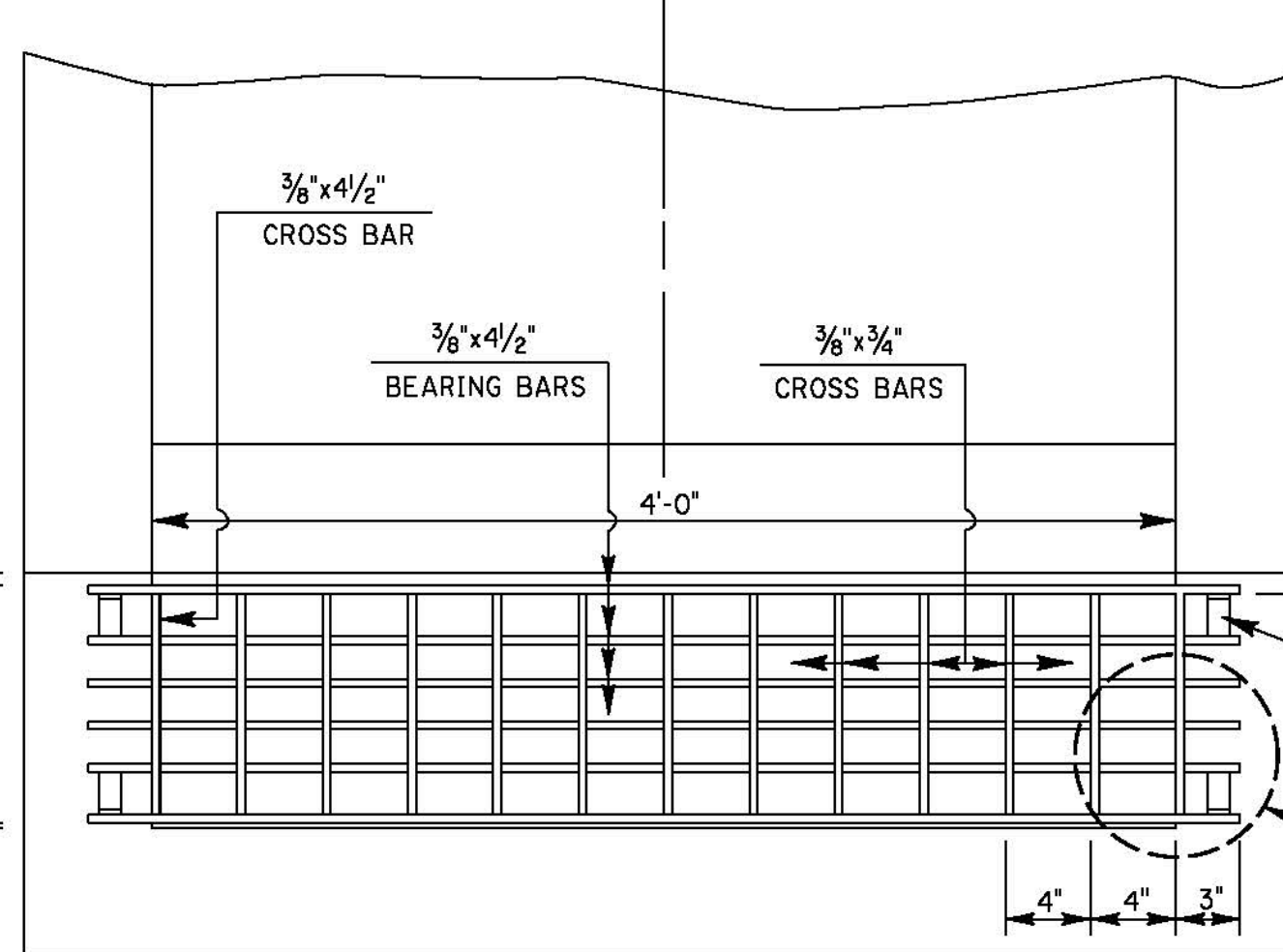
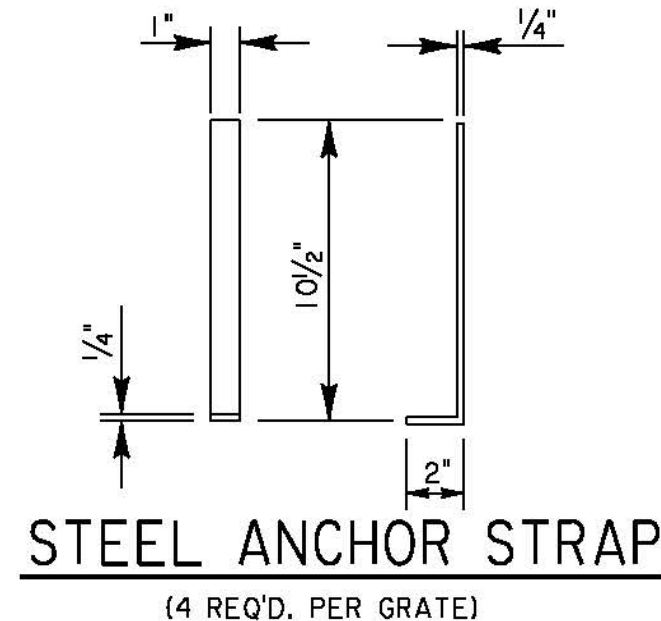
CENTER TO CENTER OF BEARING BARS EQUAL 2 11/16".
WEIGHT OF DRAIN GRATE = 176 LBS. ± 5%

DETAILS OF WELDED
& SEALED DRAIN GRATE

WELD FULL DEPTH. SEAL AFTER STRENGTH WELD IS COMPLETED.
WEIGHT OF DRAIN GRATE = 185 LBS. ± 5%

TYPE "I"

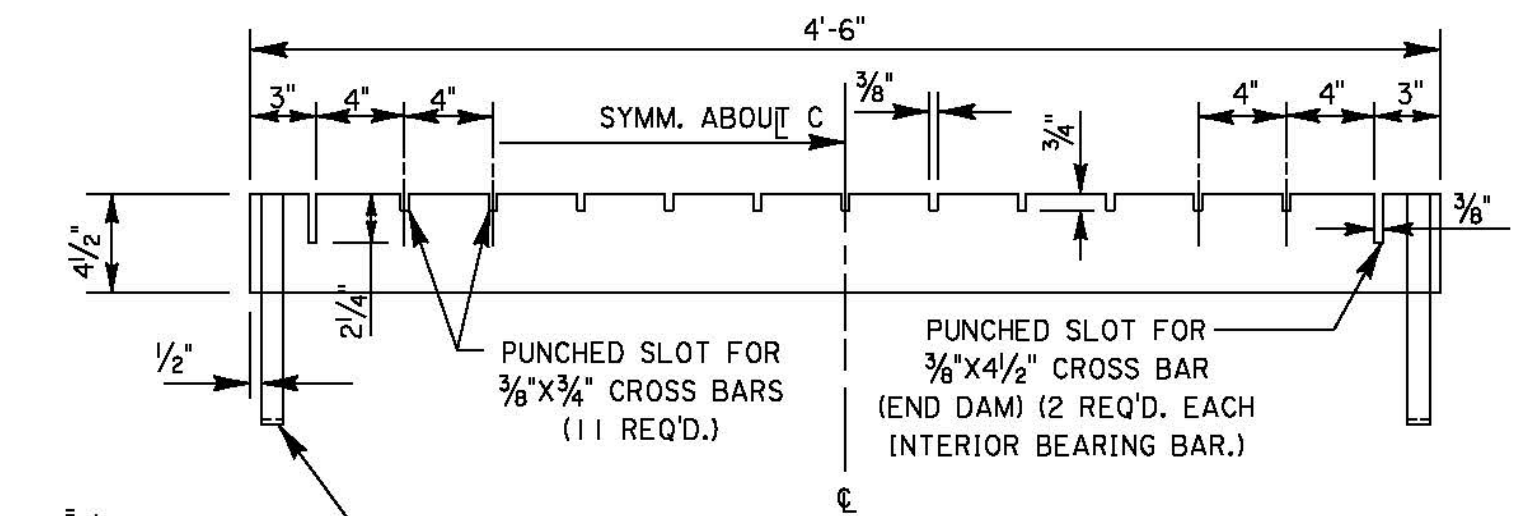
GRATE TO BE GALVANIZED AFTER FABRICATION.



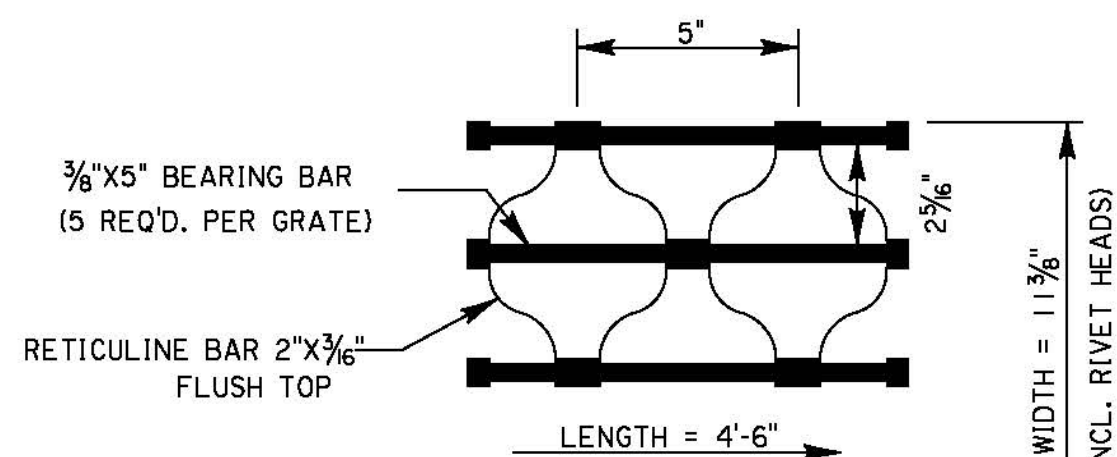
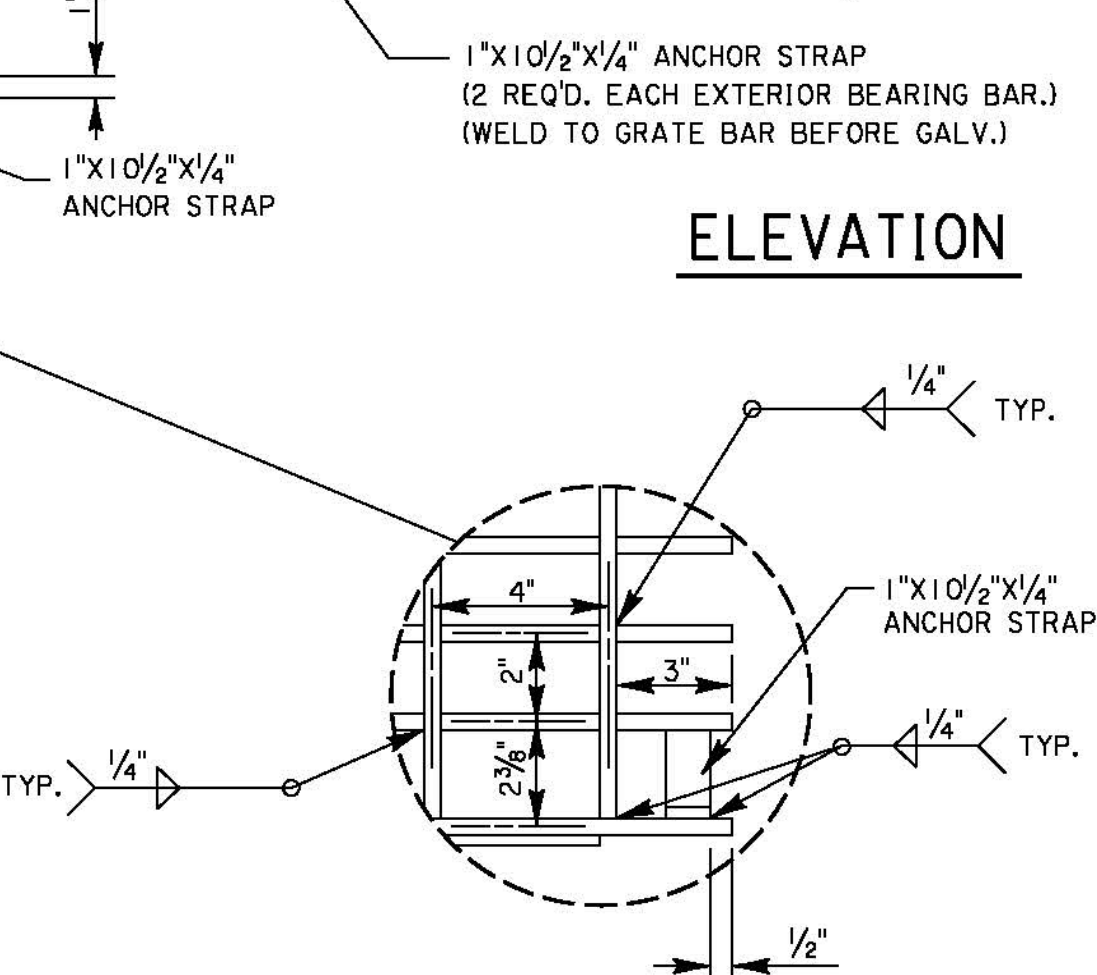
PLAN

WELDED AND SEALED
STEEL GRATE

3/8" X 4 1/2" END CROSS BAR.
(2 REQ'D. PER GRATE)



ELEVATION



DRAIN GRATE DETAIL
(ALTERNATE)