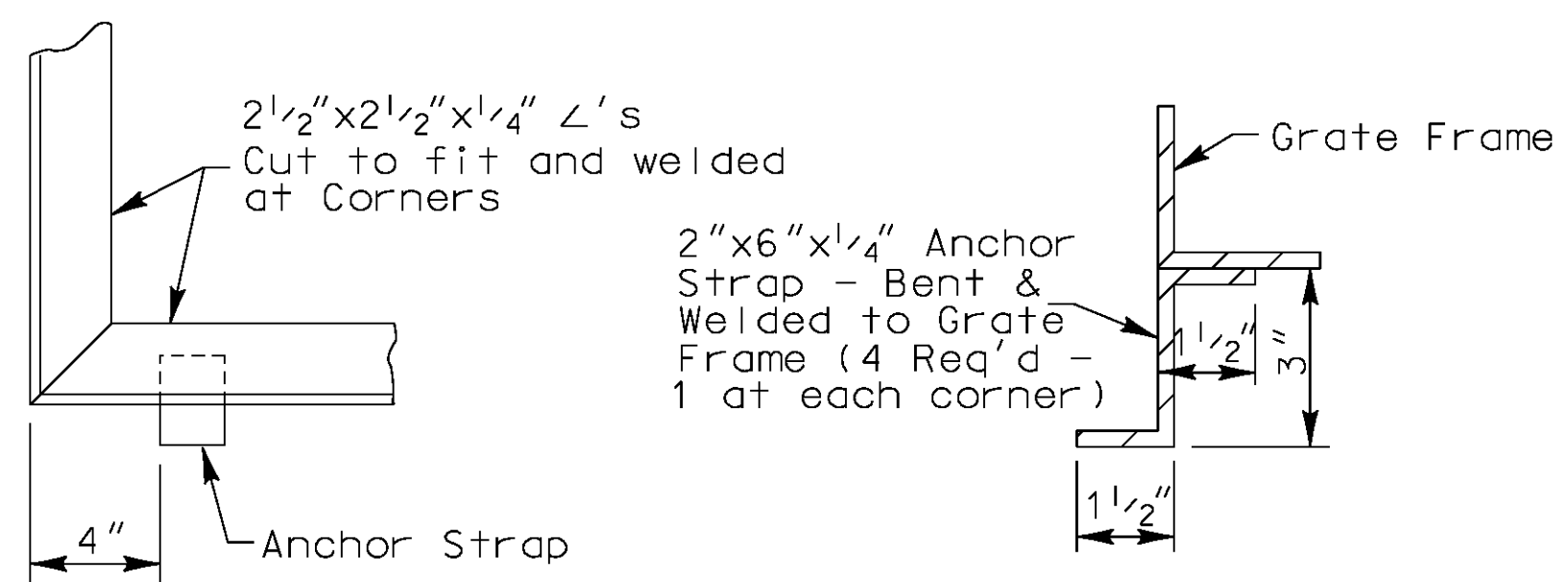
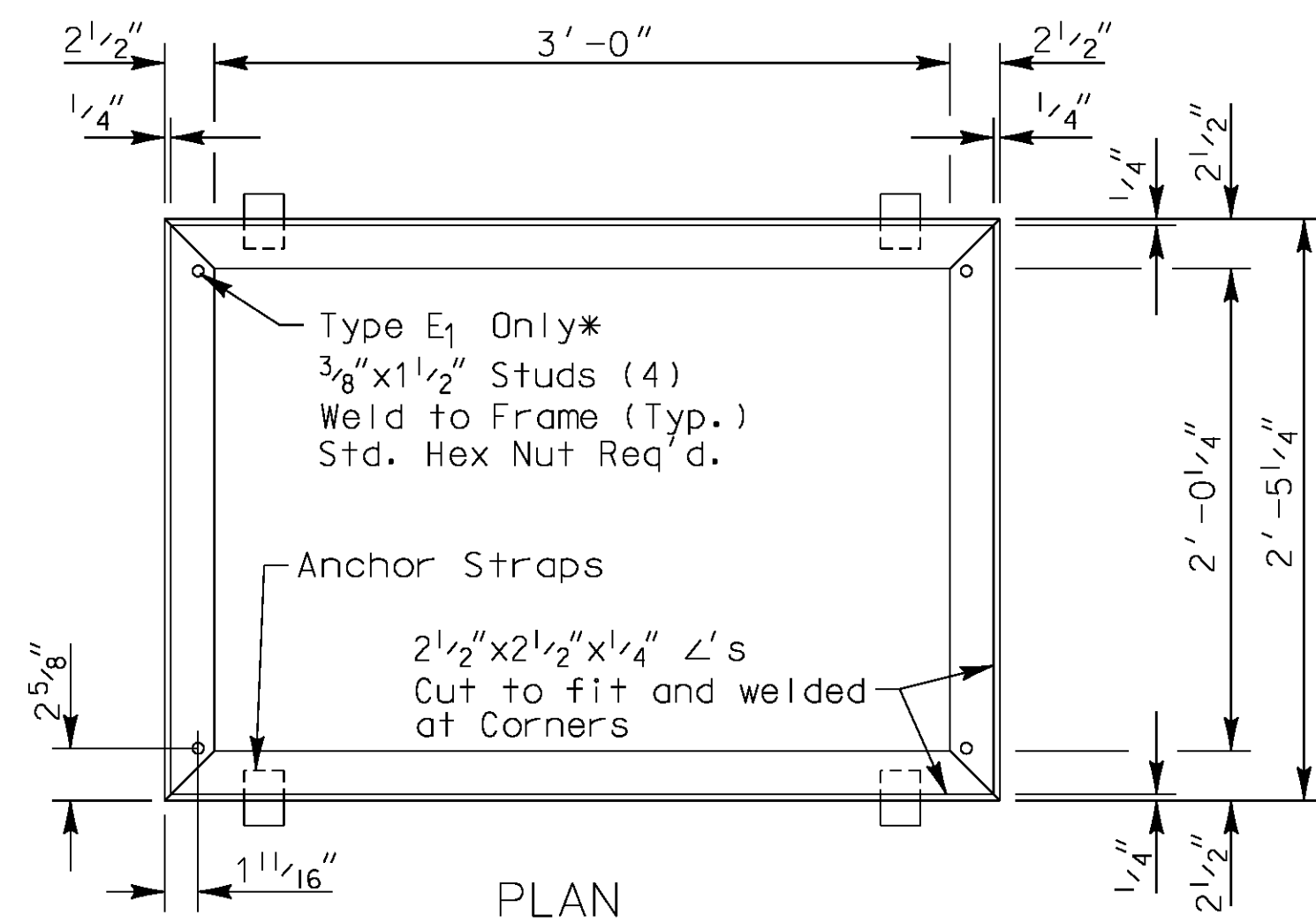


**TYPE "D"**

**DETAILS OF CAST IRON GRATE**

- Notes: 1. Casting to be A.S.T.M. Class 30  
2. Weight of Casting = 49lbs

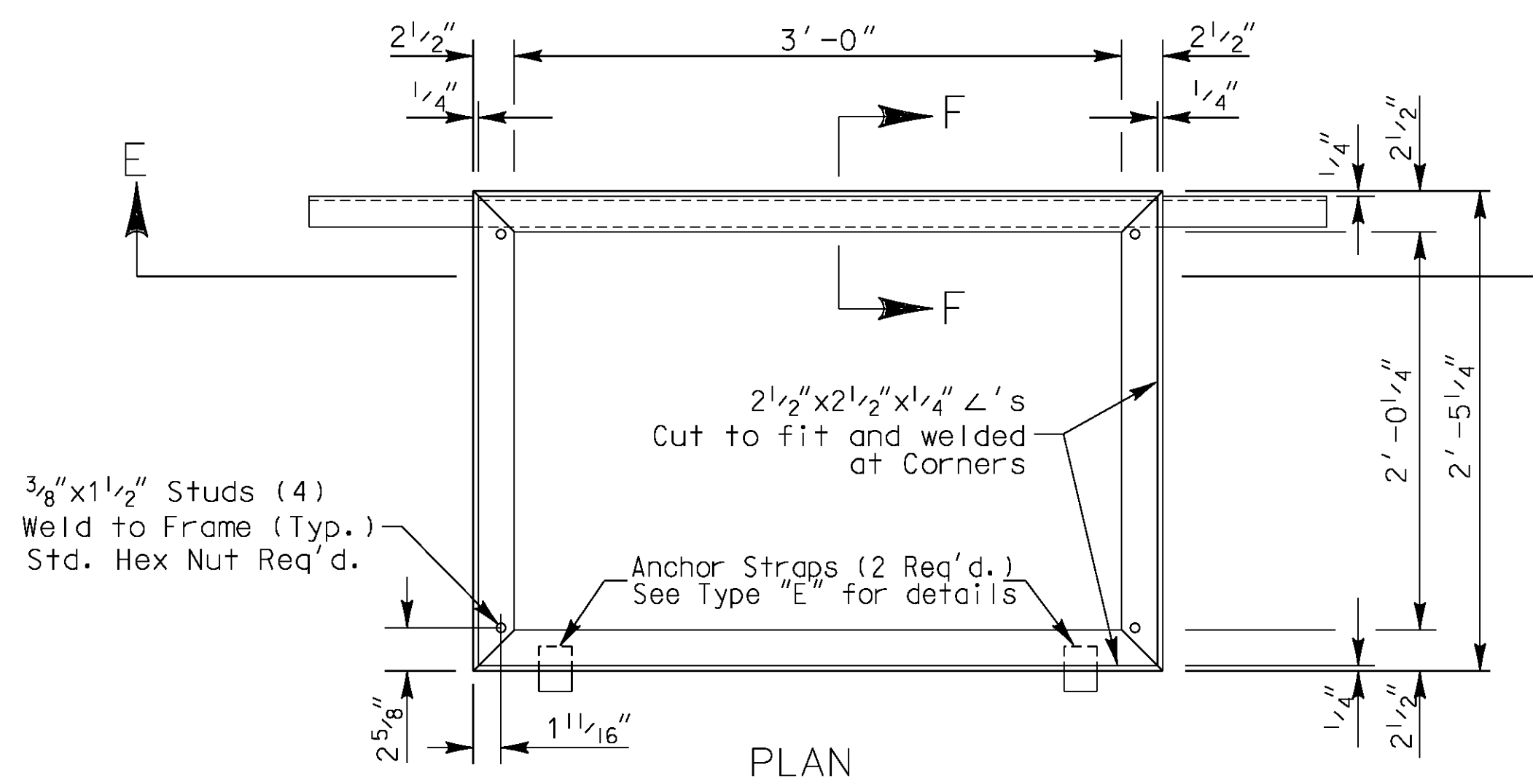
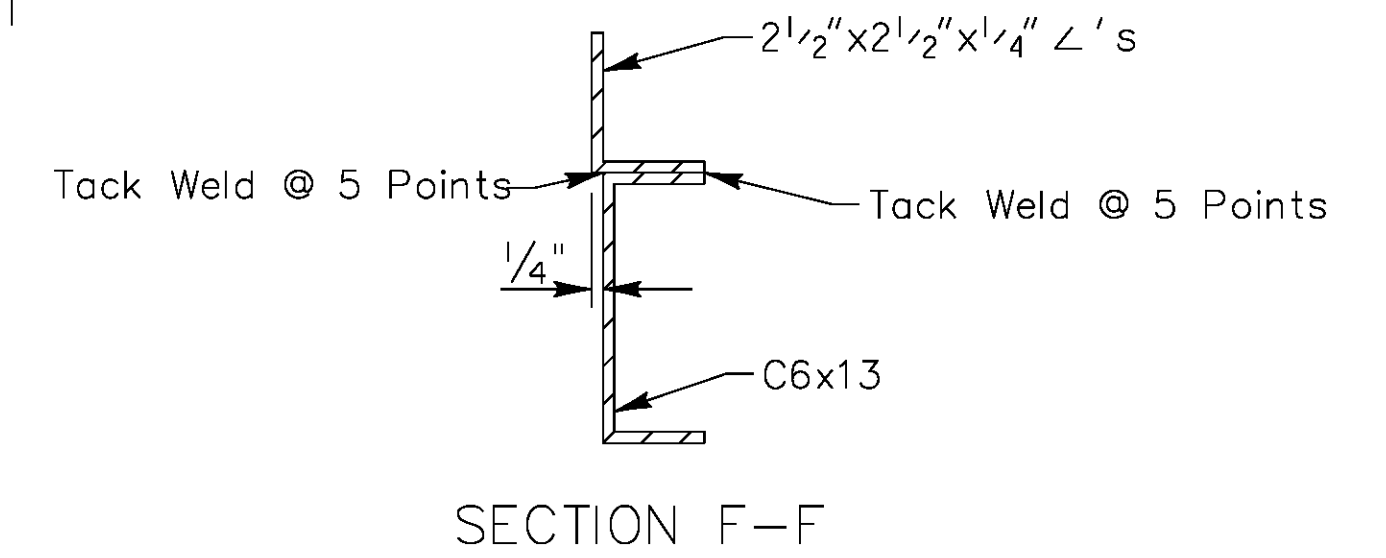
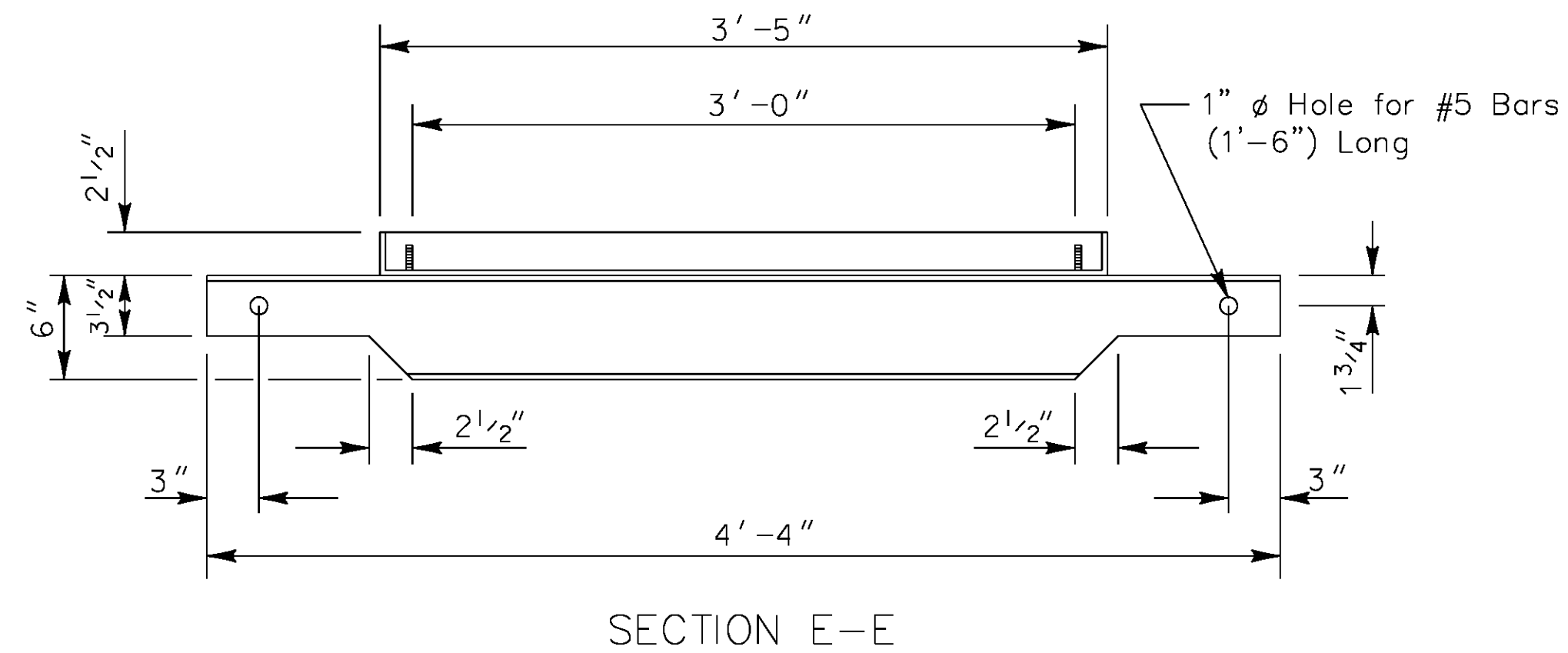


**ANCHOR STRAP DETAILS**

**TYPE "E" or "E1"**

**DETAILS OF GRATE FRAME**

- Notes: 1. Grate Frame to be galvanized after fabrication.  
2. Weight of Grate Frame = 52lbs



**TYPE "F"**

**DETAILS OF GRATE FRAME**

- Notes: 1. Grate Frame to be galvanized after fabrication.  
2. Weight of Grate Frame = 52 lbs. ±5%