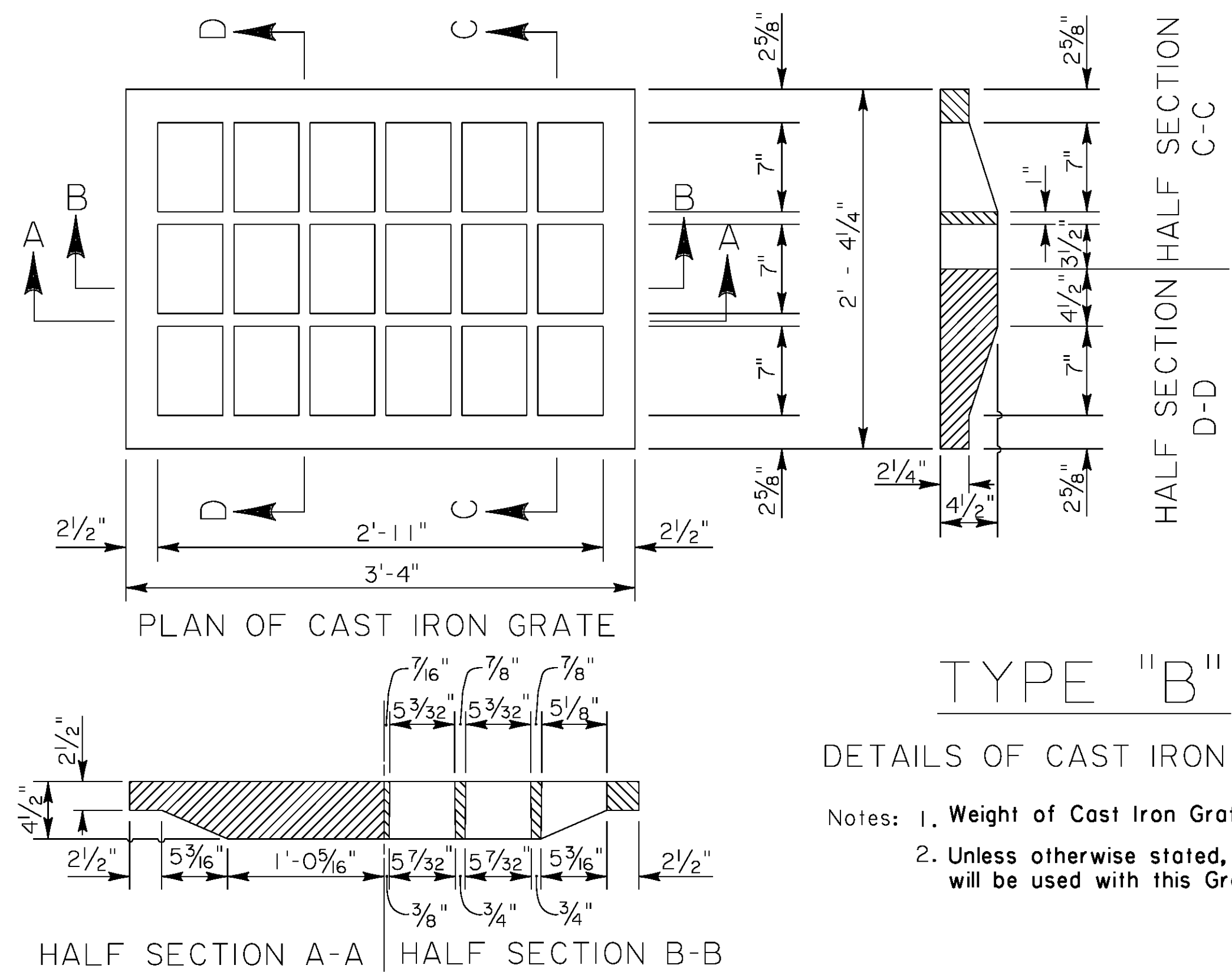
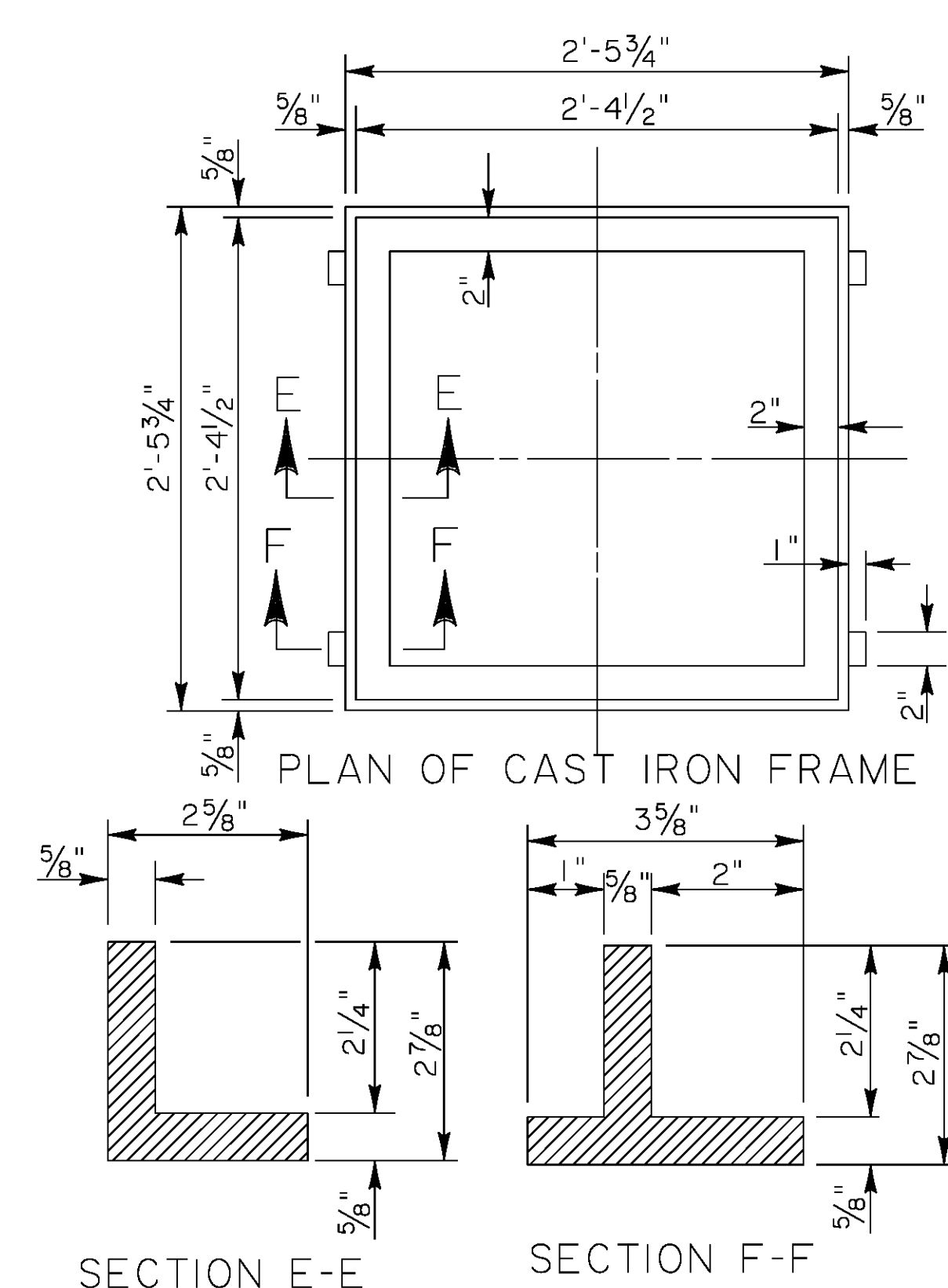


TYPE "A"

DETAILS OF CAST IRON GRATE & FRAME

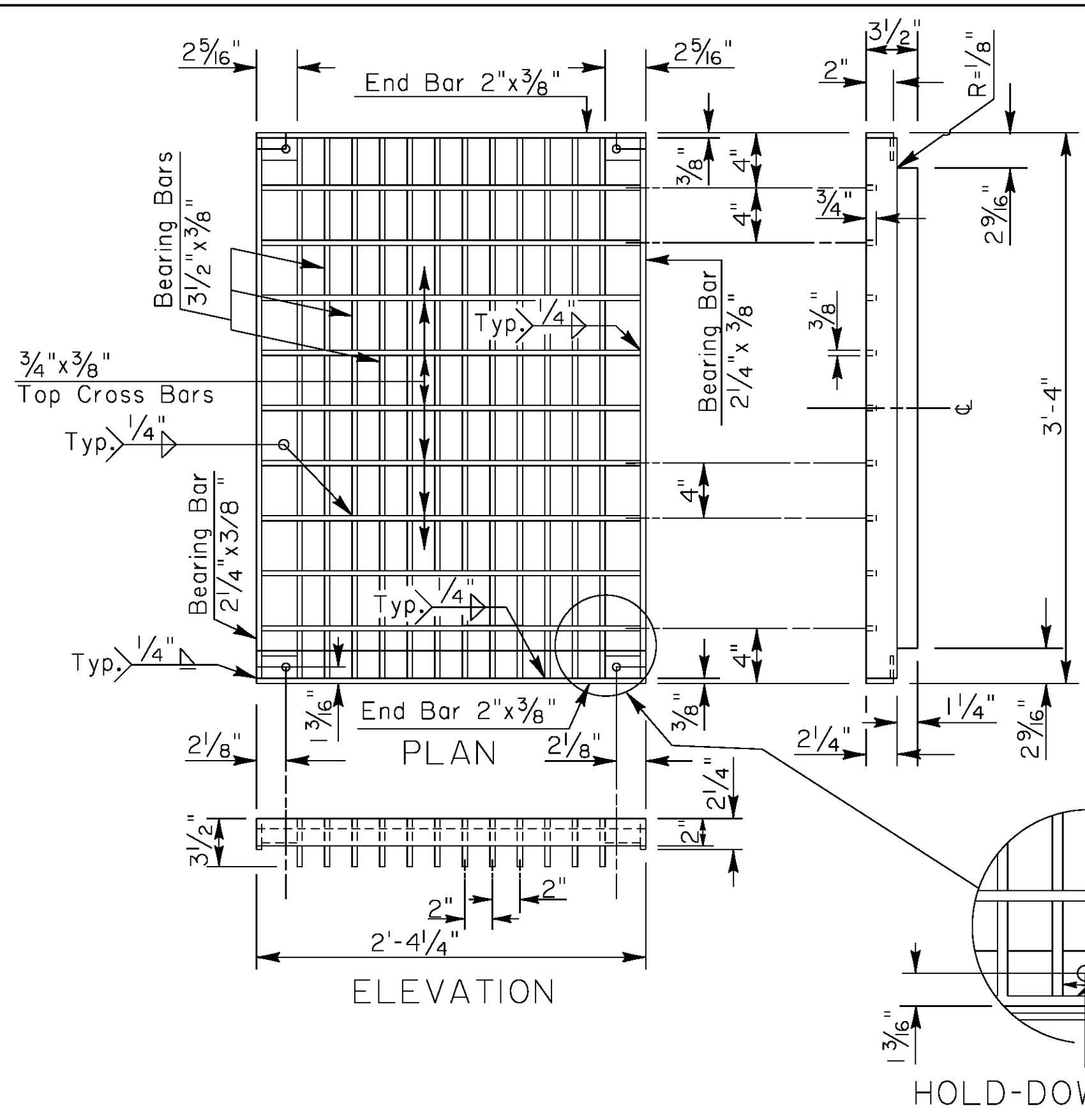
Notes: 1. Weight of Cast Iron Grate = 334lbs
 2. Weight of Cast Iron Frame = 90lbs



TYPE "B"

DETAILS OF CAST IRON GRATE

Notes: 1. Weight of Cast Iron Grate = 350lbs
 2. Unless otherwise stated, TYPE "E" frame will be used with this Grate.



TYPE "C"

Notes: 1. Grates to be galvanized after fabrication.
 2. Unless otherwise stated, TYPE "E" Frame is to be used with these grates. (See Sheet 2)
 3. Supplier of Grate also is to furnish Pre-Fitted Grate Frame.
 4. Galvanized reticulate grate able to withstand traffic loading to be used for this project.

DETAILS OF WELDED & SEALED DRAIN GRATE

Continuous Weld for full depth each Bearing Bar to End Bars and Cross Bars.
 All Bearing Bars to be set flush on Grate Frame.
 Weight of Drain Grate = 233 lbs. ± 5%

DETAILS OF RIVETED RETICULATE DRAIN GRATE ALTERNATE

Continuous Weld for full depth each Bearing Bar to End Bars.
 All Bearing Bars to be set flush on Grate Frame.
 Center to Center of Bearing Bars equal 2 5/16" plus Bearing Bar Thickness.
 Weight of Drain Grate = 266 lbs. ± 5%

