

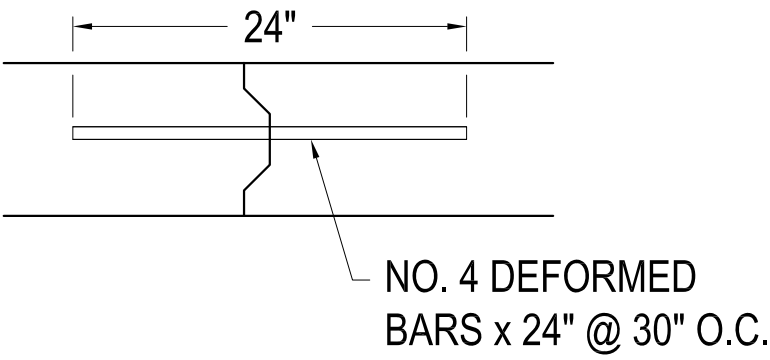
GENERAL NOTES:

- 1.) FOR OPEN DITCH SYSTEMS, EXTEND CULVERT TO 10' BEYOND EDGE OF DRIVEWAY.
- 2.) MAXIMUM DRIVEWAY GRADE SHALL BE 10%. MAXIMUM BREAKS IN GRADE SHALL BE 10%.
- 3.) KEEP TIE BARS 18" FROM JOINT.

SIDEWALK CROSS SLOPE
1 IN V : 50 IN H MAX

SIDEWALK RUNNING SLOPE
1 FT V : 12 FT H MAX.

KEYWAY DETAIL

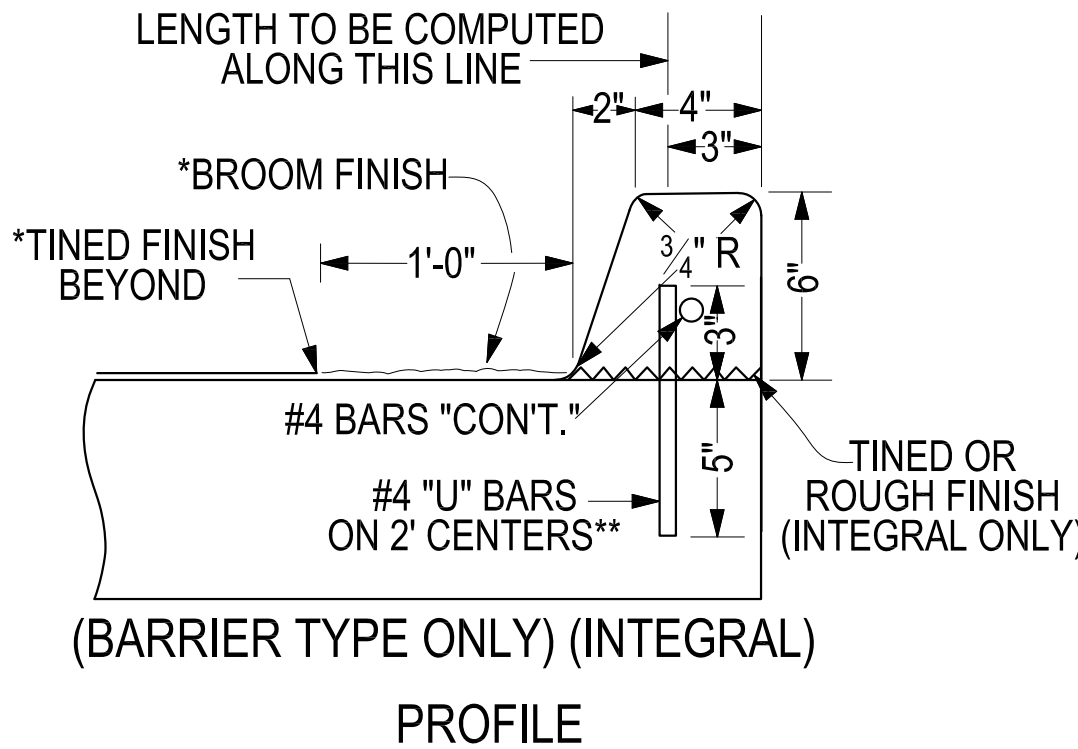


TINED FINISH
BEYOND
(PERPENDICULAR
TO THE CURBING)

BROOM FINISH
1'-0"
(PERPENDICULAR
TO THE CURBING)

BARRIER CURB
6"

PLAN



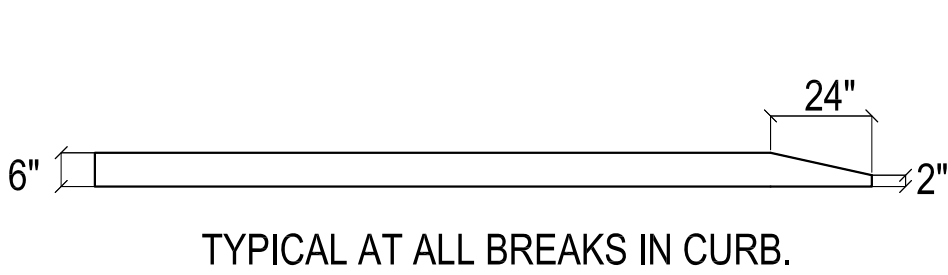
CONCRETE CURB

*TINED FINISH AND BROOM FINISH PERPENDICULAR TO CURB.
**STEEL REINFORCEMENT NOT NECESSARY IF
CONSTRUCTED MONOLITHICALLY WITH THE PAVEMENT.

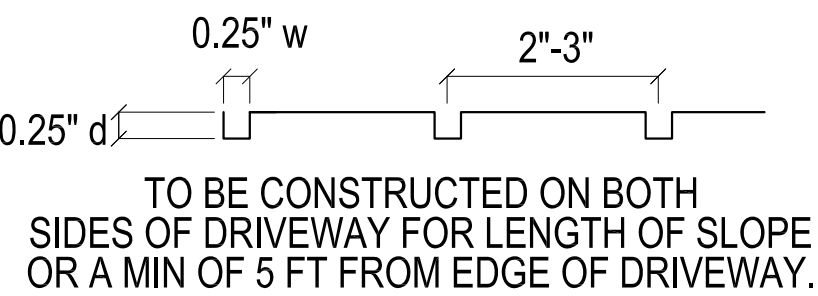
SIDEWALK NOTES:

- SIDEWALKS WILL BE A MINIMUM OF 5' WIDE AND MEET THE FOLLOWING STANDARDS:
1. CONSTRUCTED OF A MIN. OF 2500 PSI PORTLAND CEMENT CONCRETE, A MIN. OF 4" THICK.
 2. MINIMUM 3/4" THICK REDWOOD EXPANSION JOINT A MAX. OF EVERY 60' OR AS NEEDED.
 3. SCORED CONTRACTION JOINTS (MAXIMUM OF WIDTH OF WALK).
 4. SIDEWALKS ACROSS DRIVEWAYS OR THAT WILL BE CROSSED BY VEHICLES WILL BE 8" THICK MIN. AND MEET CURRENT ADA STANDARDS.
 5. SOIL BENEATH SIDEWALK WILL EITHER BE NATURAL UNDISTURBED SOIL, OTHERWISE COMPACTED TO 90% STANDARD PROCTOR, MINIMUM.
 6. SIDEWALKS WILL BE PROVIDED WITH A BROOMED SURFACE TEXTURE.
 7. SIDEWALKS WILL BE CONTINUOUS AND EVEN (THEY MAY BE SLOPED FOR TERRAIN AND DRAINAGE) WITHOUT AN OBSTACLE OR BUMP THAT WILL IMPEDE, TRIP OR PRESENT A SAFETY HAZARD FOR PEDESTRIANS.
 8. SIDEWALK WILL BE CONTINUOUS OVER THE FULL FRONTAGE OF THE DEVELOPMENT.
 9. AT STREET CORNERS THE SIDEWALK IN BOTH DIRECTIONS WILL EXTEND TO THE PAVEMENT EDGE. IF A DITCH CULVERT IS REQUIRED TO ACCOMPLISH THIS IT WILL BE CONSIDERED PART OF THE SIDEWALK REQUIREMENT. THE SIZE AND GRADE OF CULVERTS WILL BE DETERMINED BY THE ENGINEER OF RECORD.
 10. HANDICAP RAMPS SHALL BE INSTALLED IN ACCORDANCE WITH CURRENT ADA STANDARDS BY DEVELOPER. ALL SIDEWALK AREAS, INCLUDING THROUGH DRIVEWAY AREAS, MUST MEET ADA SPECS FOR CROSS SLOPE AND RUNNING SLOPE.

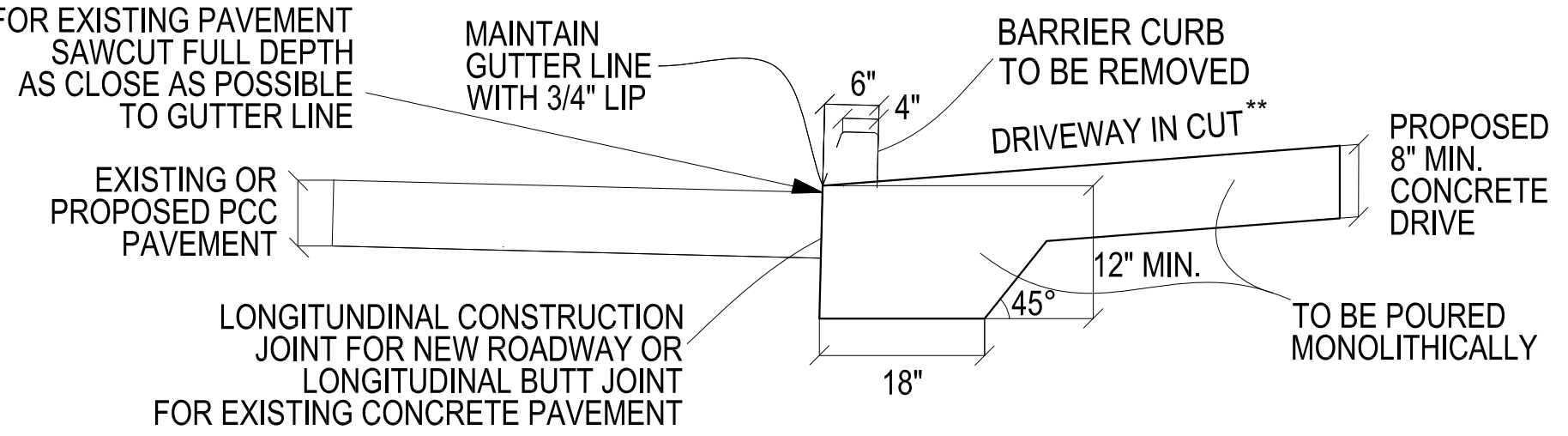
DETAIL A - BARRIER CURB TRANSITION



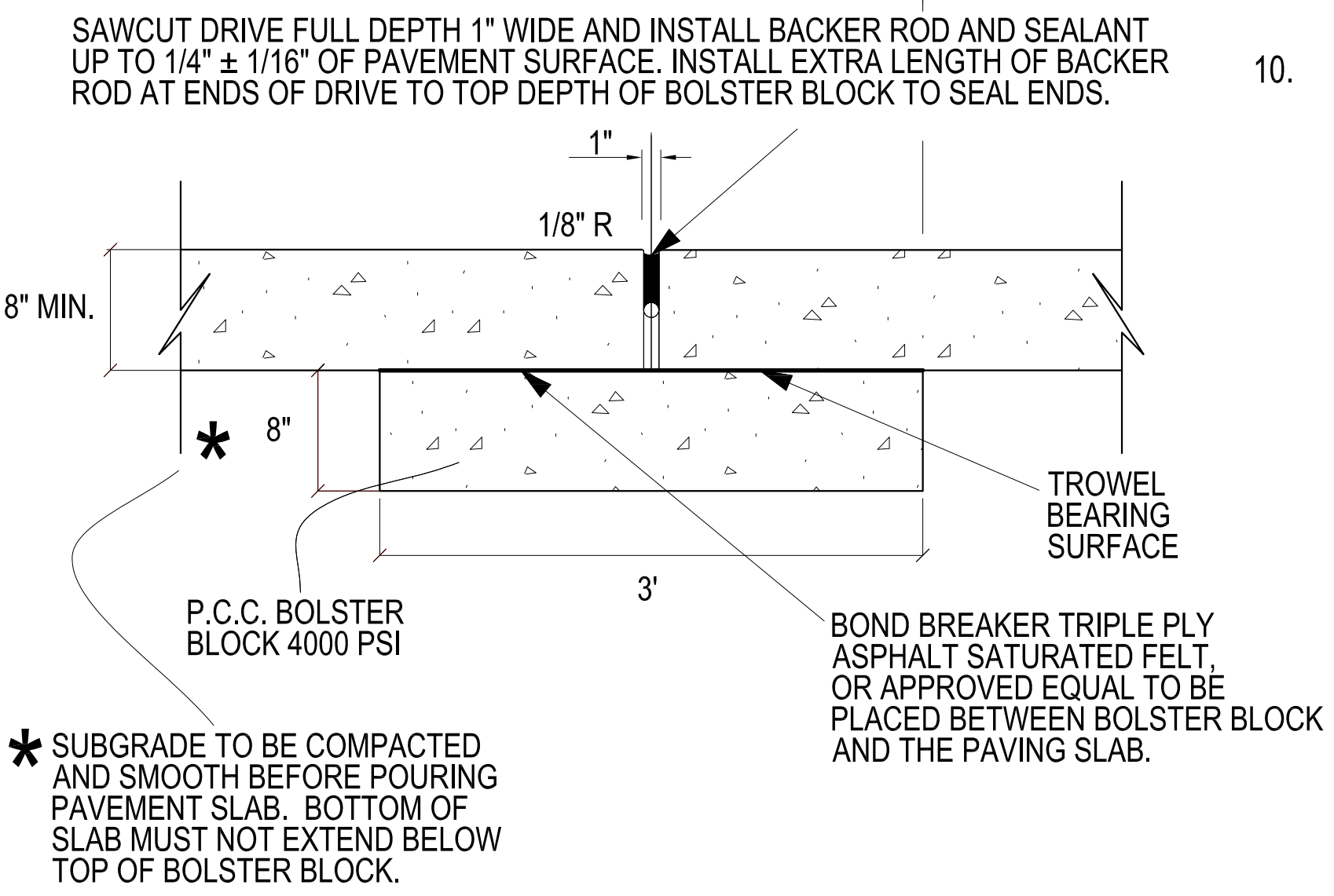
DETAIL B - SIDEWALK GROOVES



DETAIL C - PCCP TO DRIVE TIE IN



DETAIL D - EXPANSION JOINT



DETAIL E - 2 FT OFFSET

