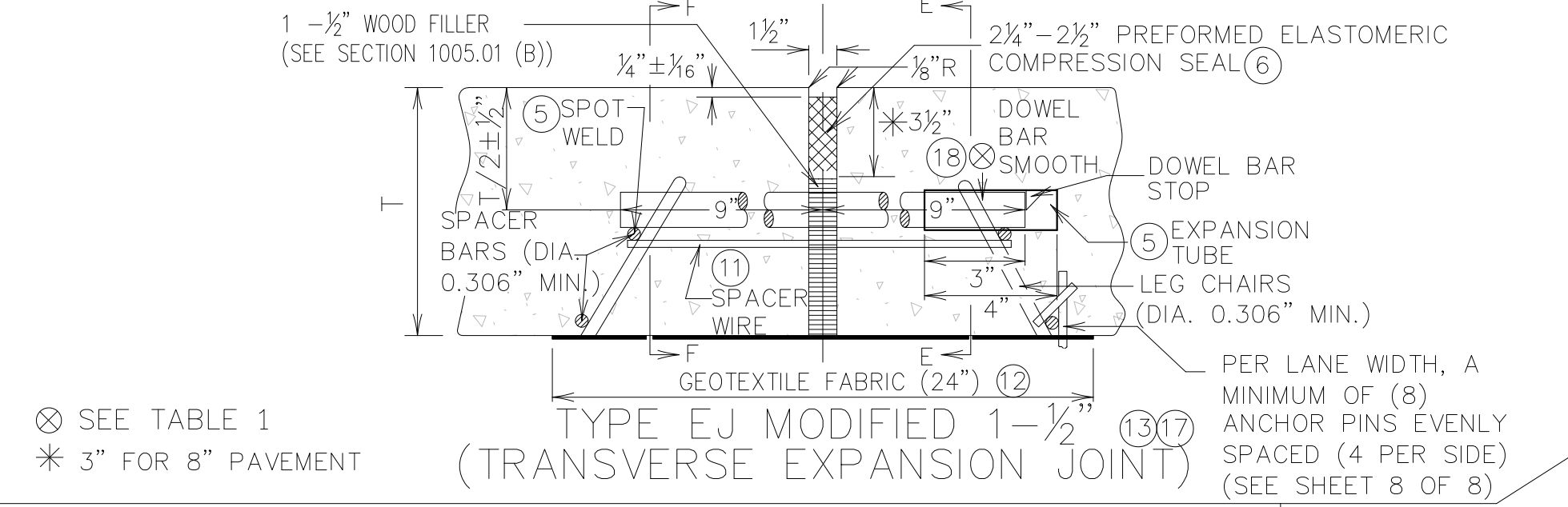
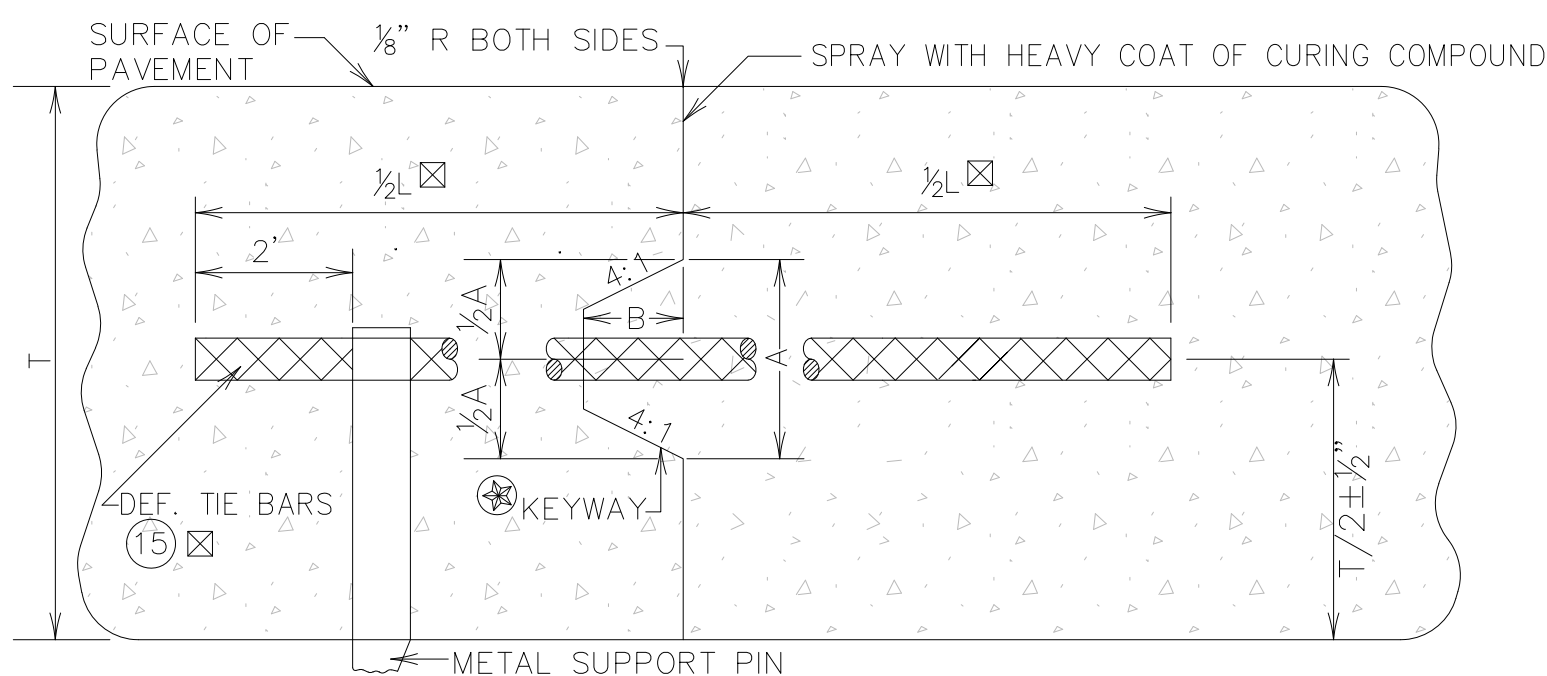


SECTION A-A  
TYPE EJ 1-1/2" JOINT  
(TRANSVERSE EXPANSION JOINT)

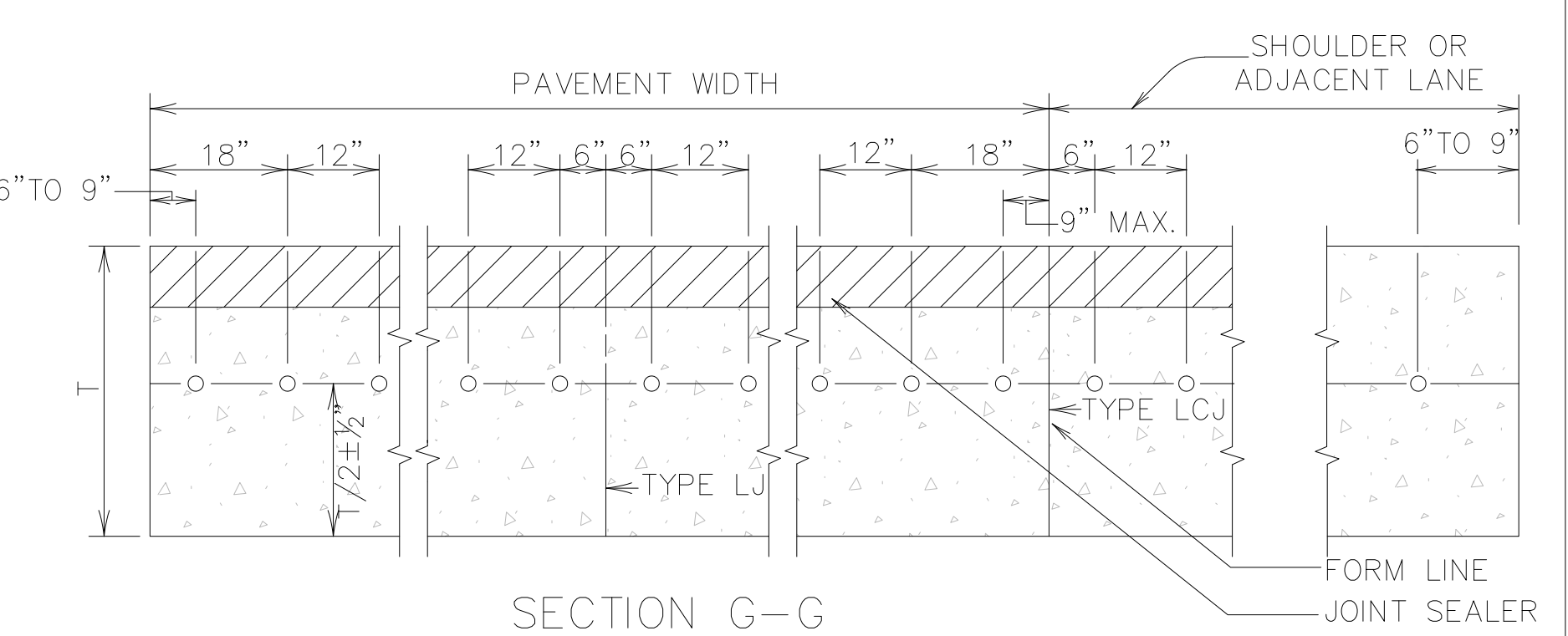


TYPE EJ MODIFIED 1-1/2" JOINT  
(TRANSVERSE EXPANSION JOINT)

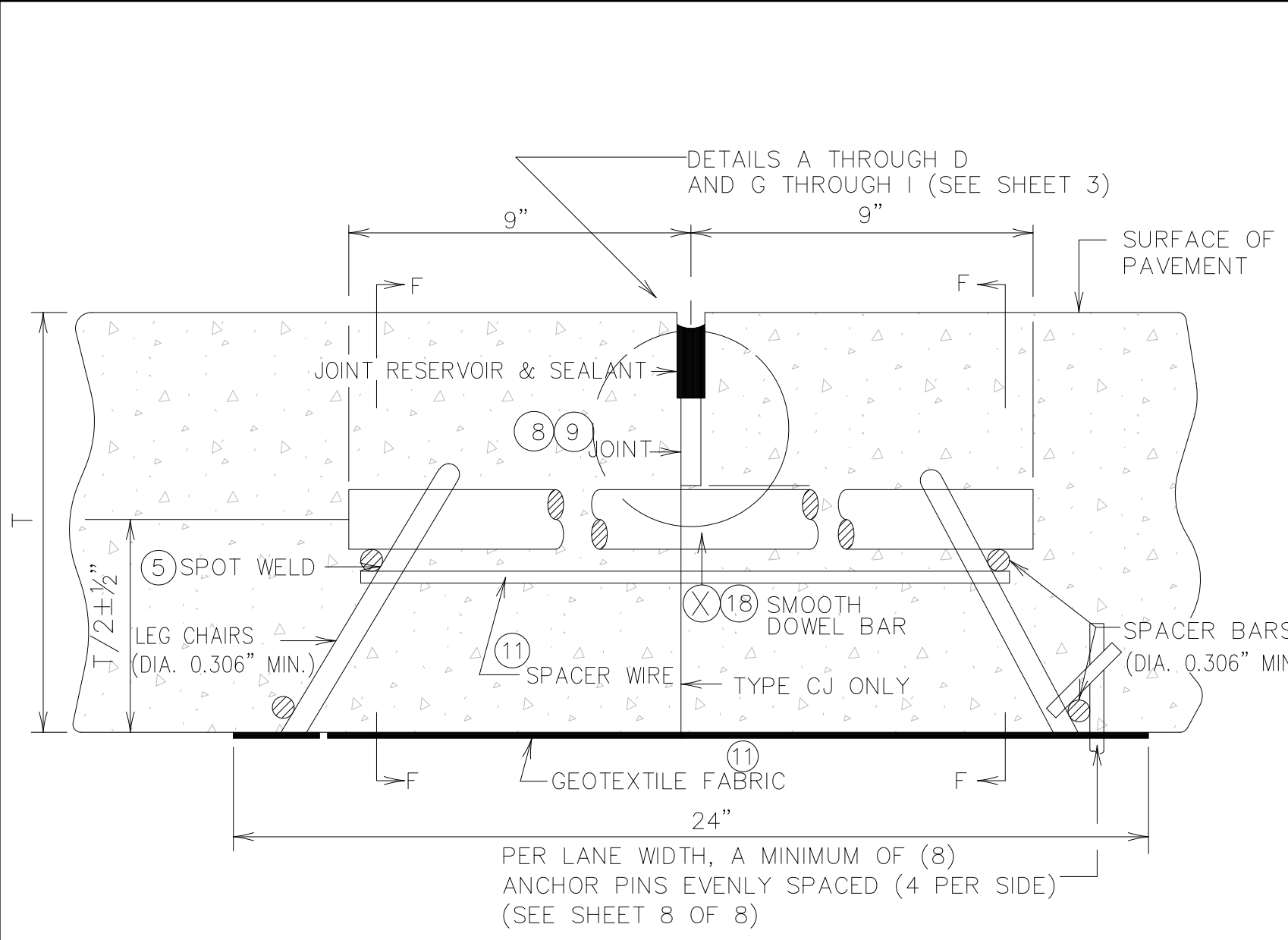


SECTION D-D  
TYPE LCJ (WITH A KEYWAY)  
(LONGITUDINAL CONSTRUCTION JOINT)

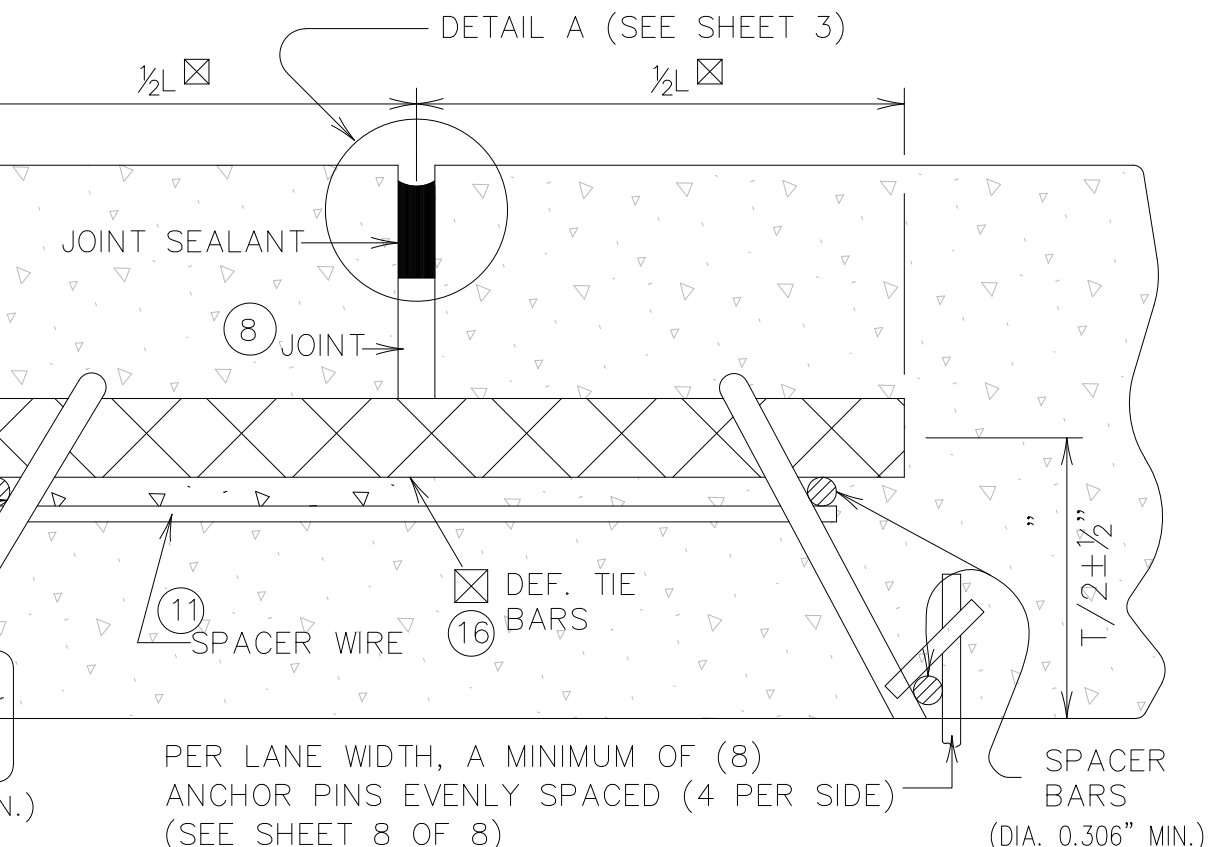
IN LIEU OF THE KEYWAY, ONE OF THE FOLLOWING OPTIONS WILL BE ALLOWED:  
A. INSTALL TIE BARS OF THE SIZE SHOWN IN TABLE 1, AT 1/2 THE SPACING.  
B. INSTALL TIE BARS 1/4" LARGER THAN THE TIE BAR DIAMETERS SHOWN IN TABLE 1, AT THE SAME SPACING.



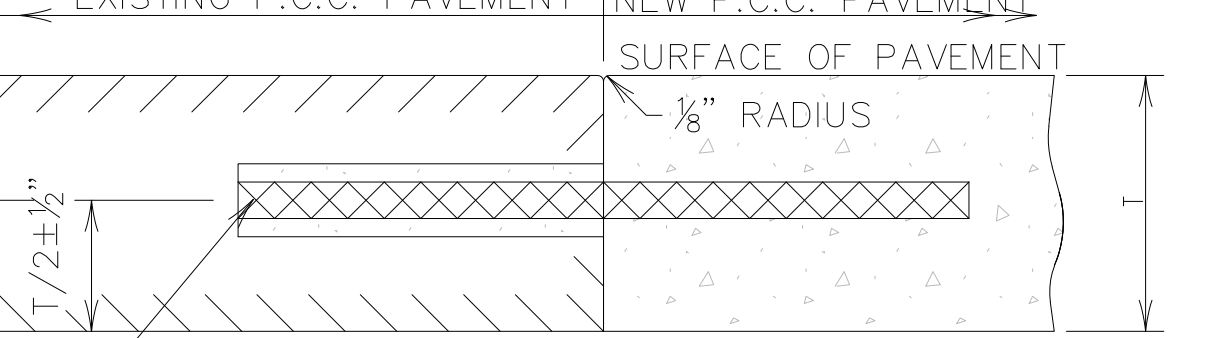
SECTION G-G  
DOWEL BAR SPACING FOR  
TYPE TCJ, CJ, EJ 1 - 1/2",  
AND EJ 1 - 1/2" MODIFIED JOINTS



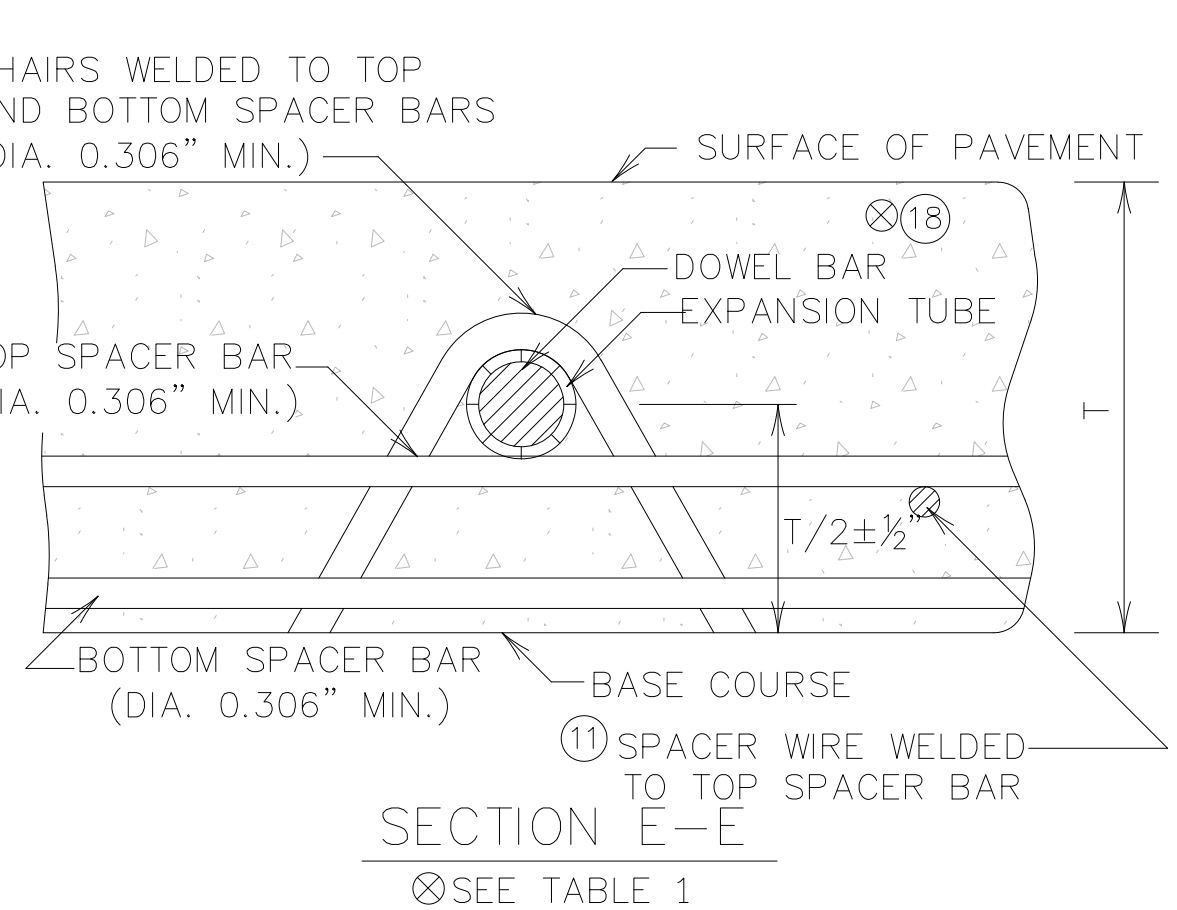
SECTION B-B  
TYPE TCJ OR CJ JOINT  
(TRANSVERSE CONTRACTION JOINT OR CONSTRUCTION JOINT)



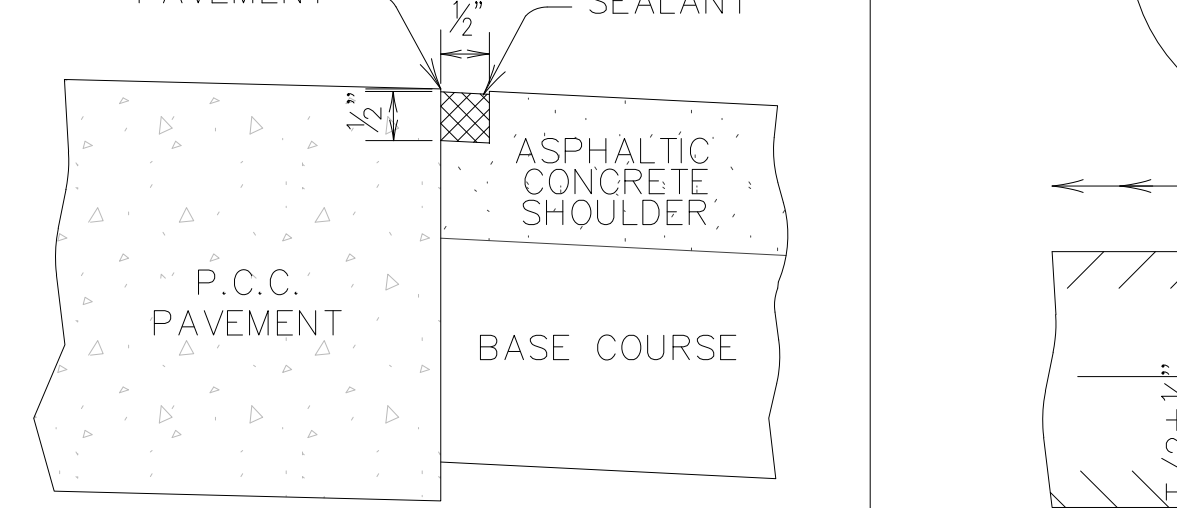
SECTION D-D  
TYPE LJ (WITHOUT A KEYWAY)  
(LONGITUDINAL JOINT)  
(REQUIRED WHEN PAVEMENT WIDTH EXCEEDS 15')  
(SEE NOTE (8))



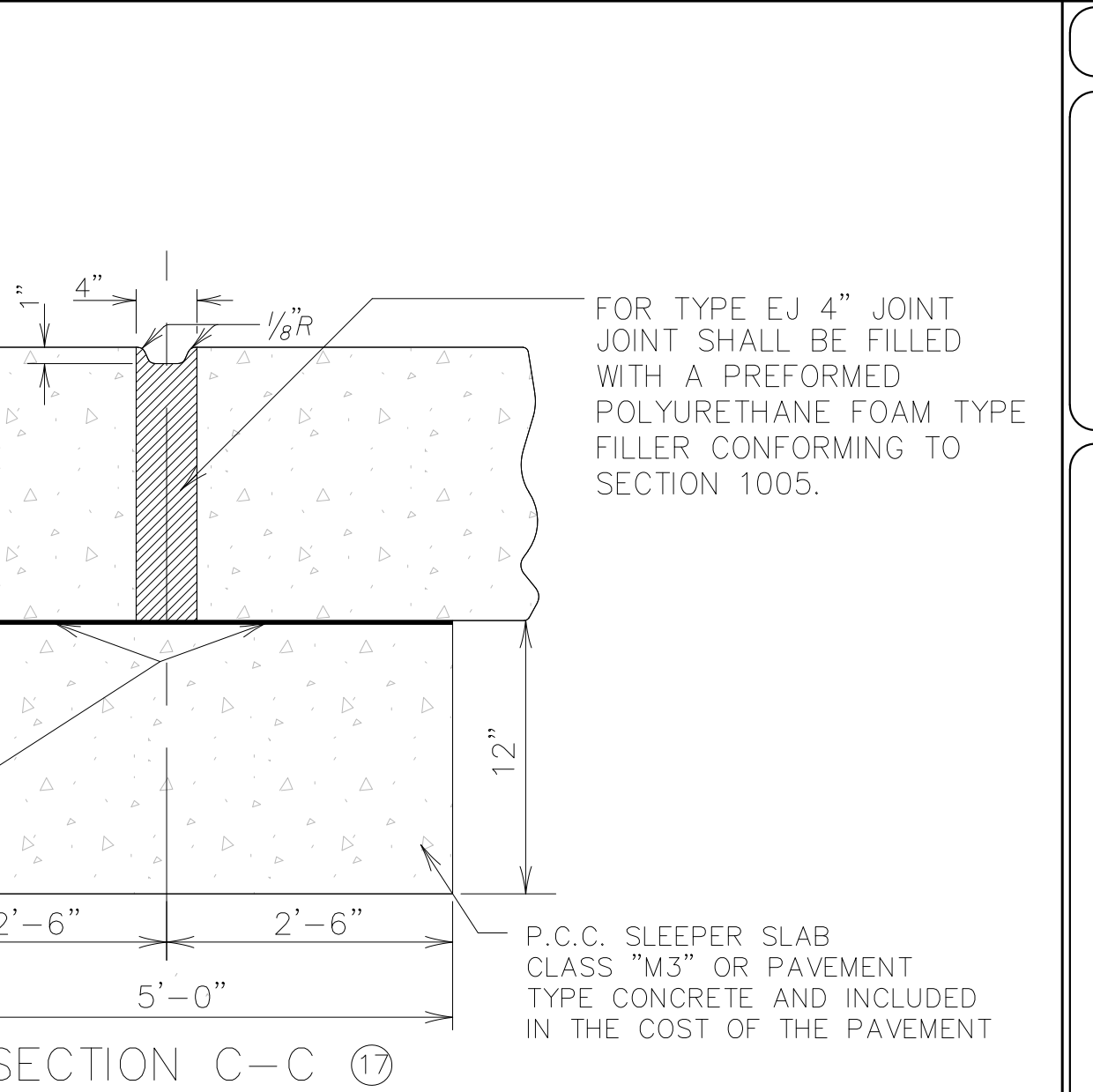
SECTION H-H  
TYPE LBJ  
(LONGITUDINAL BUTT JOINT)



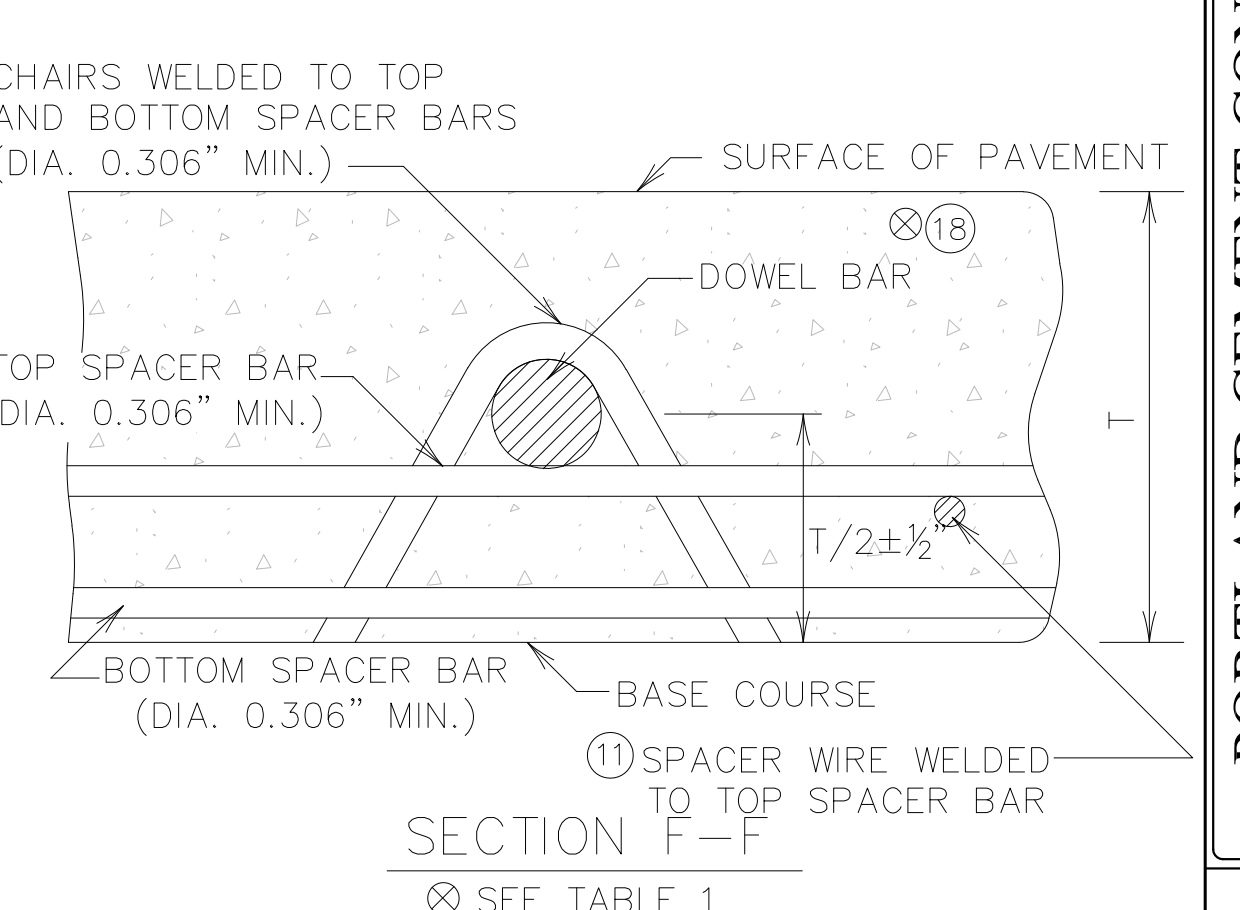
SECTION E-E  
HOT POURED SEALANT  
SECTION 1005



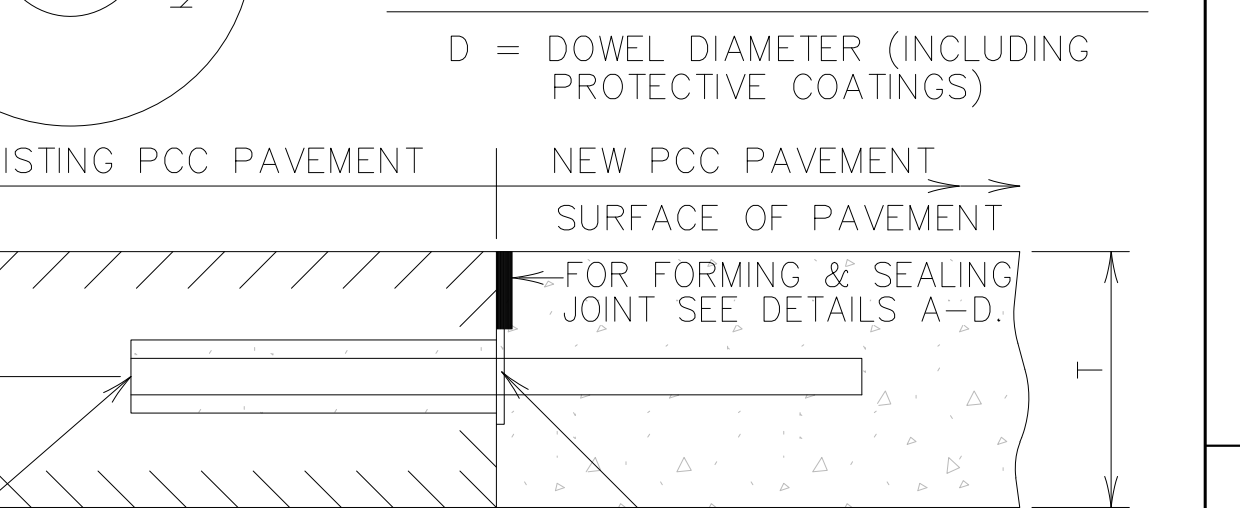
SECTION I-I  
HOT POURED SEALANT  
SECTION 1005



SECTION C-C  
TYPE EJ 4" JOINT  
& SLEEPER SLAB



SECTION F-F  
GROUT RETENTION DISK



SECTION J-J  
TYPE BJ  
(TRANSVERSE BUTT JOINT)

NOT TO SCALE