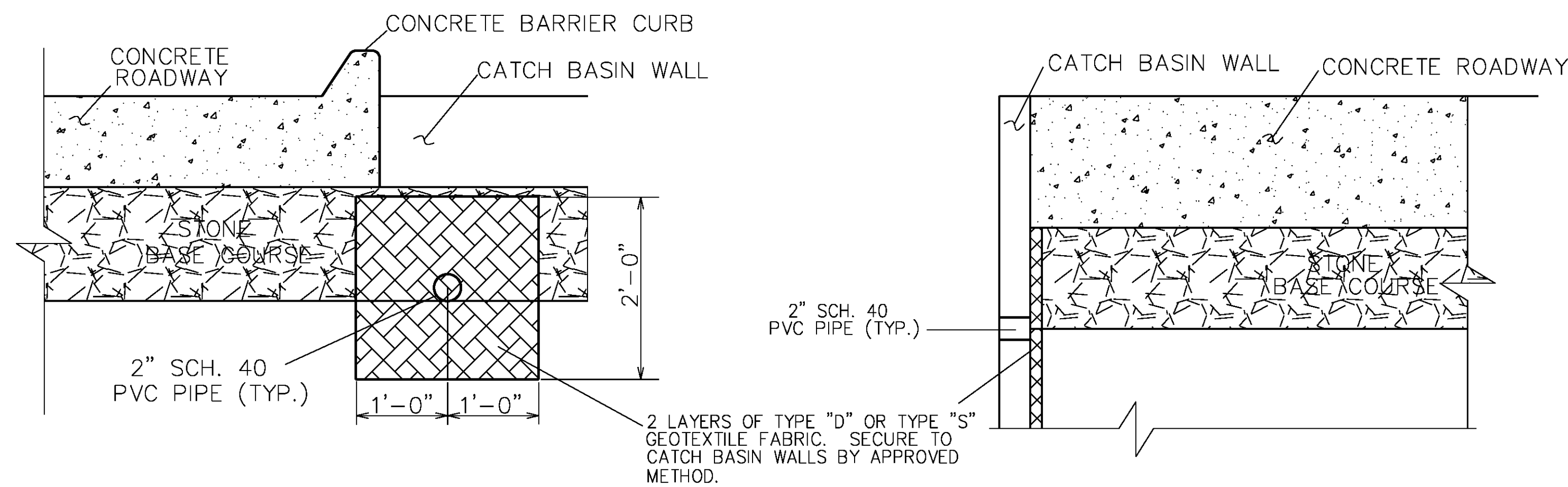


PLAN VIEW

N.T.S.



SECTION A-A

N.T.S.

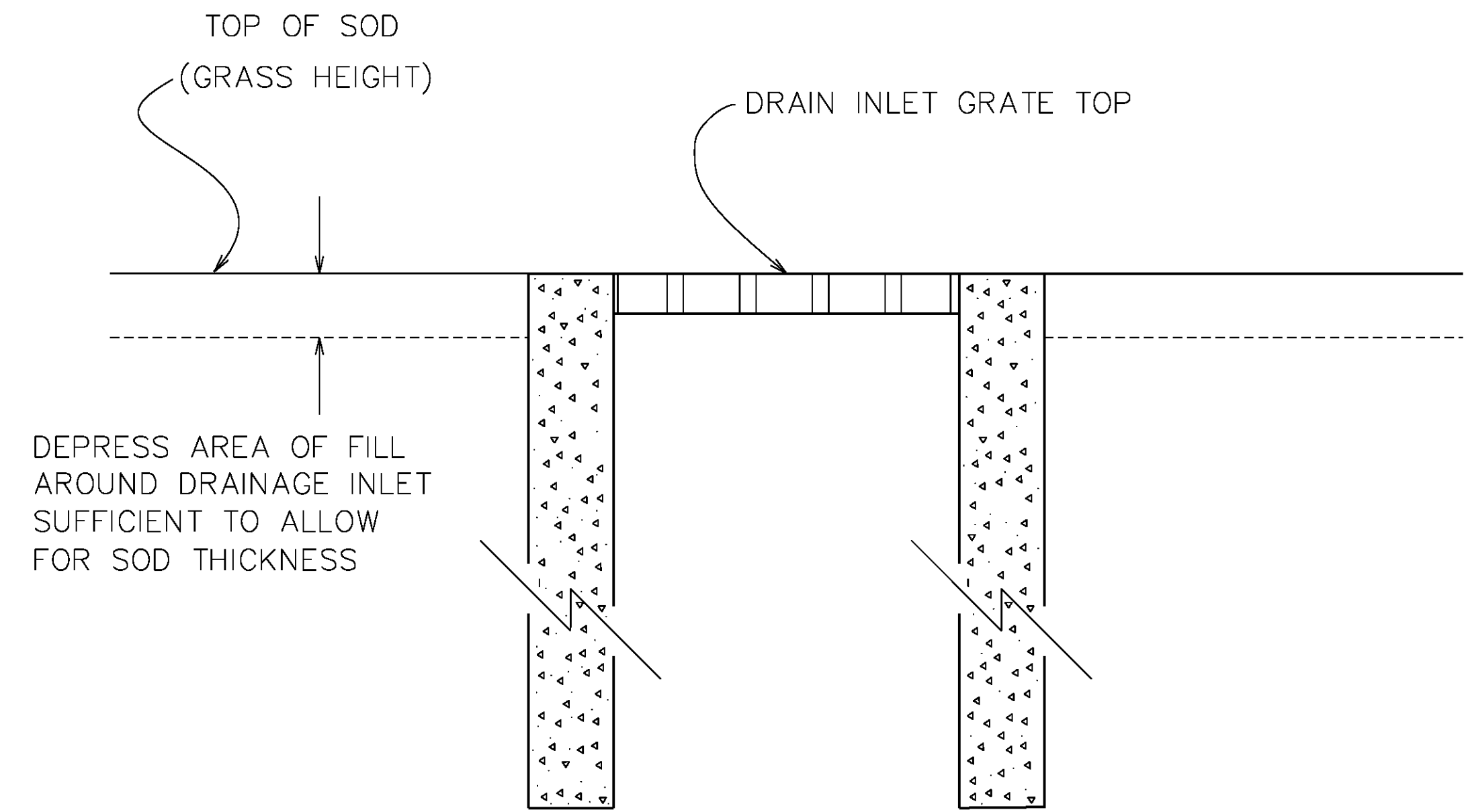
SECTION B-B

N.T.S.

WEEP HOLE DETAILS FOR CATCH BASINS

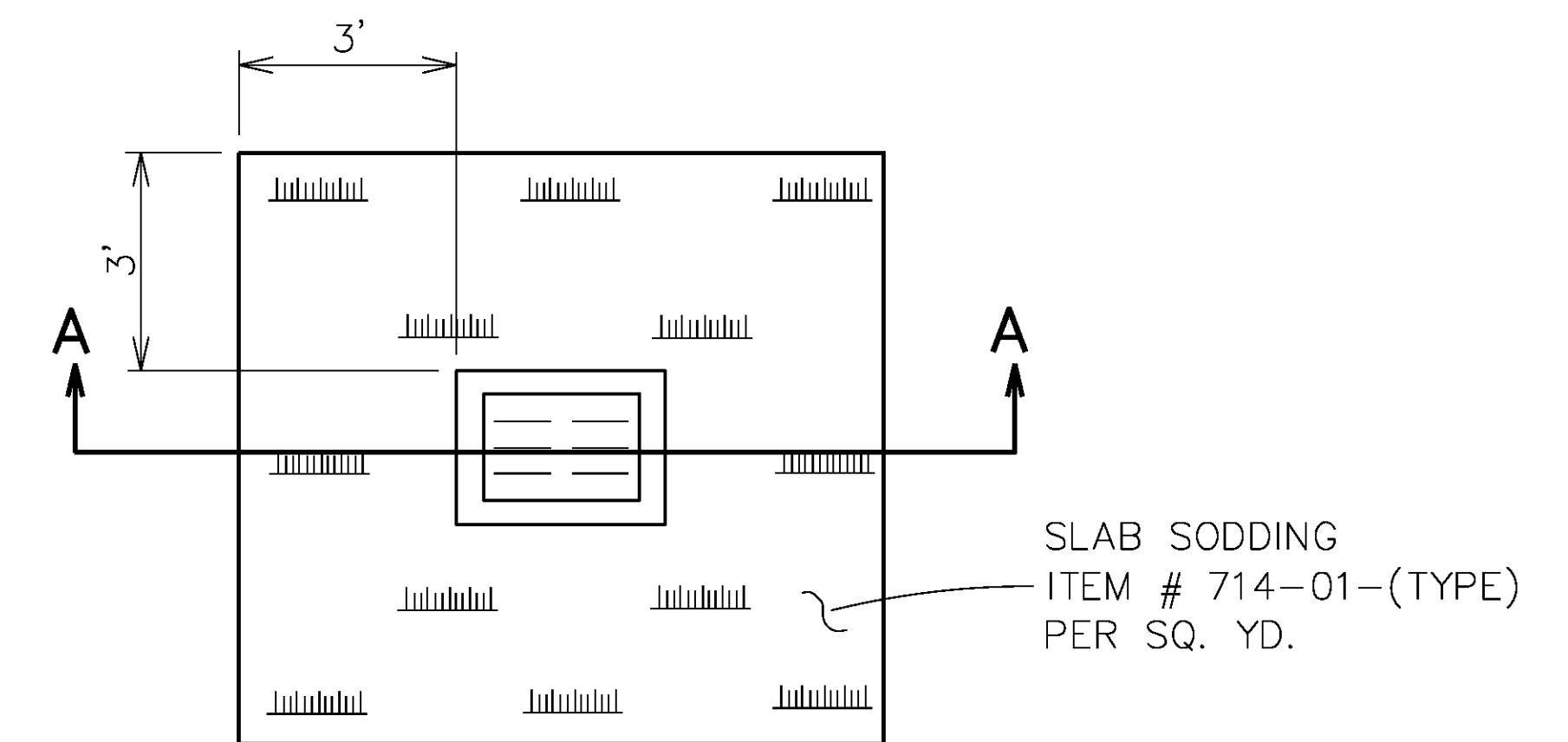
NOTES:

1. PROVIDE A MINIMUM OF 2 (MAXIMUM 4) WEEP HOLES PER WALL; MAXIMUM SPACING 3'-0" O.C. COST OF LABOR AND MATERIALS FOR CONSTRUCTION OF WEEP HOLES TO BE INCLUDED IN COST OF CATCH BASIN.
2. WHERE EXISTING CATCH BASINS ARE TO BE ADJUSTED TO GRADE, 2" WEEP HOLES ARE TO BE CORED AT LOCATIONS AS DETAILED ABOVE. COST OF CORING WEEP HOLES, PROVIDING PVC PIPE AND GEOTEXTILE FABRIC TO BE INCLUDED IN THE COST OF THE ADJUSTMENT.
3. THE OWNER RESERVES THE RIGHT TO DELETE WEEP HOLES AT SPECIFIC CATCH BASIN LOCATIONS.



SECTION A-A

N.T.S.



TYPICAL SOD AT DRAIN INLET

N.T.S.

AUGUST
2012

CATCH BASIN SPECIAL DETAILS
WEEP HOLE DETAILS FOR STREET INLETS
1 OF 1

CB-SD-01

SHEET

OF