

Public Works Re-Organization

PUBLIC WORKS RE-ORGANIZATION

Why Reorganizing is Needed

- **ACCOUNTABILITY**
- **EFFECTIVENESS**
- **FOCUS**
- **PRIORITIES**
- **PROACTIVE versus REACTIVE**
- **MORE WITH LESS**
- **REDUCING COST & RESPONSE TIME**



PUBLIC WORKS RE-ORGANIZATION

Current Public Works Master Organization

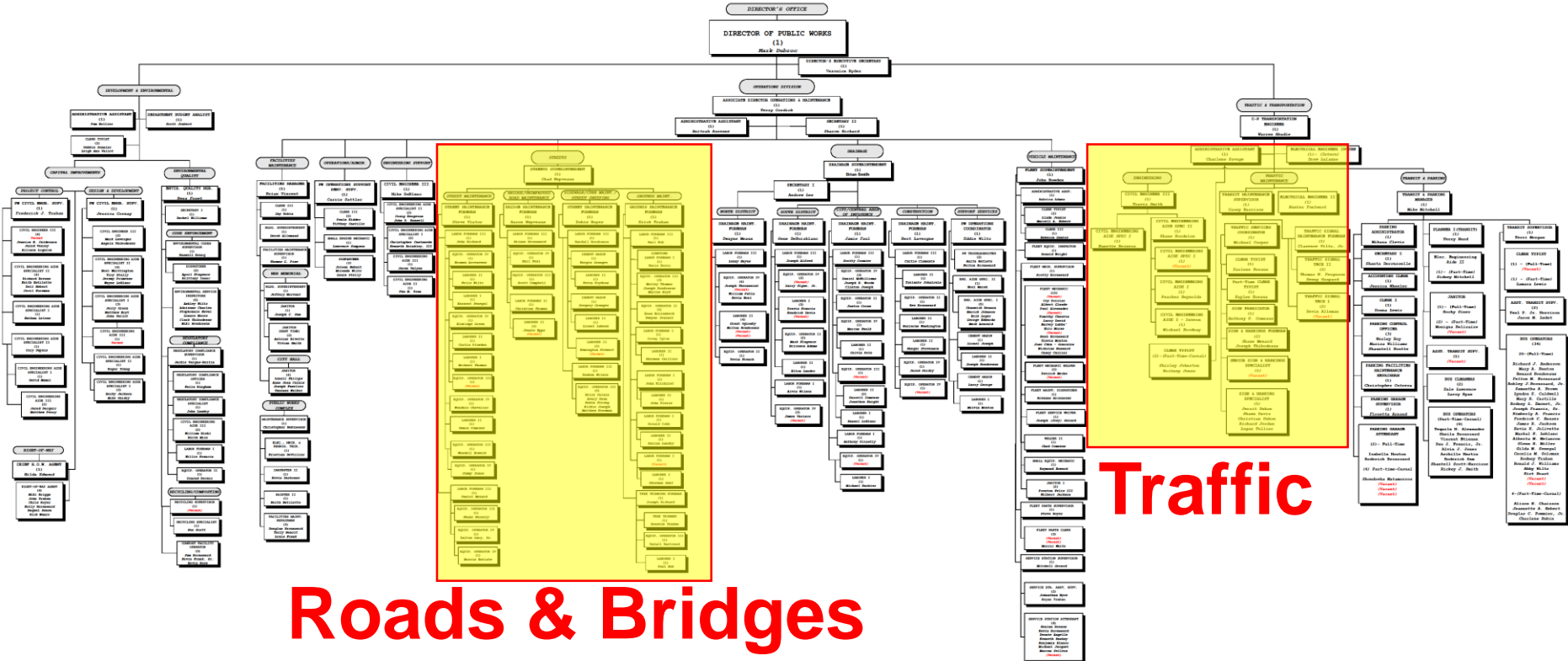
- **Over 300 Full-Time Employees**
- **\$90 Million Annual Budget**
- **Oversees:**
 - **Capital Improvements**
 - **Environmental Quality**
 - **Drainage**
 - **Road & Sidewalk Maintenance**
 - **Bridge Maintenance**
 - **Building Maintenance**
 - **Vehicle Maintenance**
 - **Traffic Engineering, Maintenance and Signals**
 - **Transit**
 - **Parking**



PUBLIC WORKS RE-ORGANIZATION

Current Public Works Master Organization

LAFAYETTE CITY/PARISH CONSOLIDATED GOVERNMENT
EXISTING PUBLIC WORKS DEPARTMENT
OCTOBER, 2019



Roads & Bridges

Traffic

CHART UPDATED: 10-08-2019

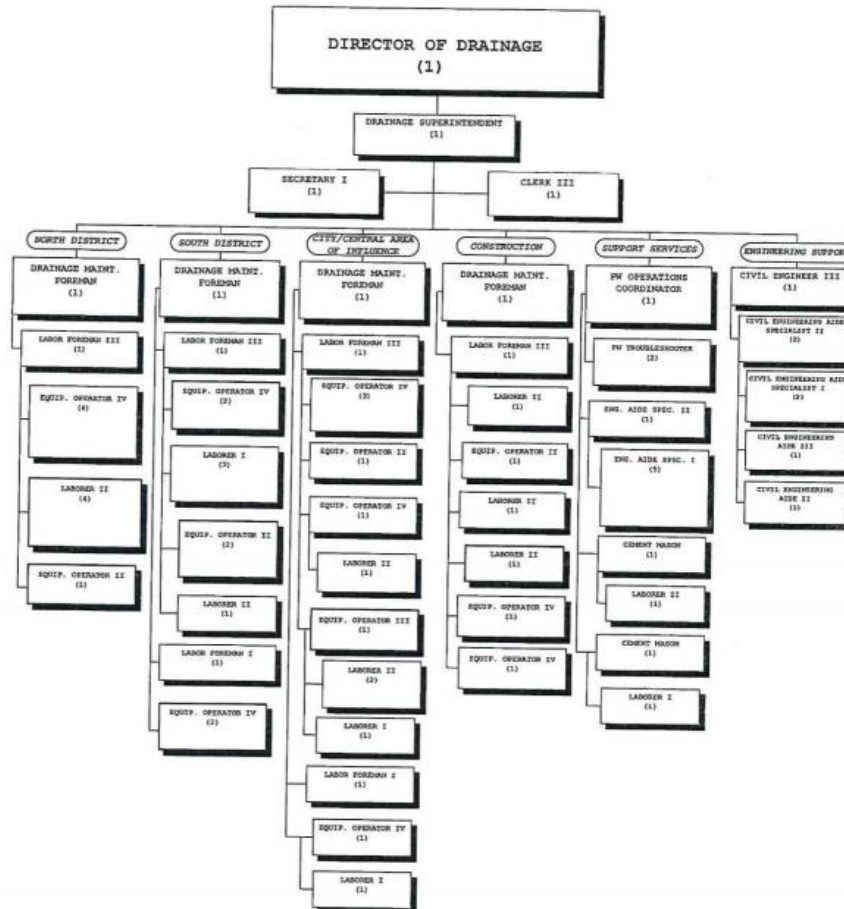


Innovation with an accent.

PUBLIC WORKS RE-ORGANIZATION

Proposed Drainage Department Organization

LAFAYETTE CITY/PARISH CONSOLIDATED GOVERNMENT DRAINAGE DEPARTMENT



PUBLIC WORKS RE-ORGANIZATION

Proposed Drainage Department Organization

- **71 Full-Time Employees**
- **Both Parish-Wide Millages Remain 100% for Drainage**
- **Oversees**
 - **Drainage Maintenance**

PUBLIC WORKS RE-ORGANIZATION

Proposed Traffic, Roads & Bridges Department Organization

- **86 Full-Time Employees**
- **All Monies Originally Dedicated to Roads & Bridges Remain Dedicated to Roads & Bridges**
- **Oversees:**
 - **Traffic Engineering, Maintenance and Signals**
 - **Road & Sidewalk Maintenance**
 - **Bridge Maintenance**



PUBLIC WORKS RE-ORGANIZATION

Proposed Public Works Organization

- Over 300 > 168 Full-Time Employees
- All Monies Originally Dedicated for these Functions Remain Dedicated
- Oversees:
 - Capital Improvements
 - Environmental Quality
 - ~~Drainage~~
 - ~~Road & Sidewalk Maintenance~~
 - ~~Bridge Maintenance~~
 - Building Maintenance
 - Vehicle Maintenance
 - ~~Traffic Engineering, Maintenance and Signals~~
 - Transportation
 - Parking



PUBLIC WORKS RE-ORGANIZATION

Proposed Public Works Organization

- **168 Full-Time Employees**
- **All Monies Originally Dedicated for these Functions Remain Dedicated**
- **Oversees:**
 - **Capital Improvements**
 - **Environmental Quality, Waste Collection, Code Enforcement**
 - **Building Maintenance**
 - **Vehicle Maintenance**
 - **Transportation**
 - **Parking**



PUBLIC WORKS RE-ORGANIZATION

Questions?

